



Canadian Nuclear Laboratories | Laboratoires Nucléaires Canadiens

## Port Granby Project

### Daily Dust Monitoring Data

## Projet de Port Granby

Surveillance journalière des particules en suspensions

**2022/01/31**

### Legend/Légende



Independent Dust Monitoring  
Surveillance indépendante



Work Site perimeter  
Périmètre du chantier general.



CNL Controlled Area  
Périmètre du site sous le control de LCN.

**Port Granby Project**  
**Daily Dust Monitoring Data**

**Projet de Port Granby**  
**Surveillance journalière des**  
**particules en suspensions**

**2022/01/31**

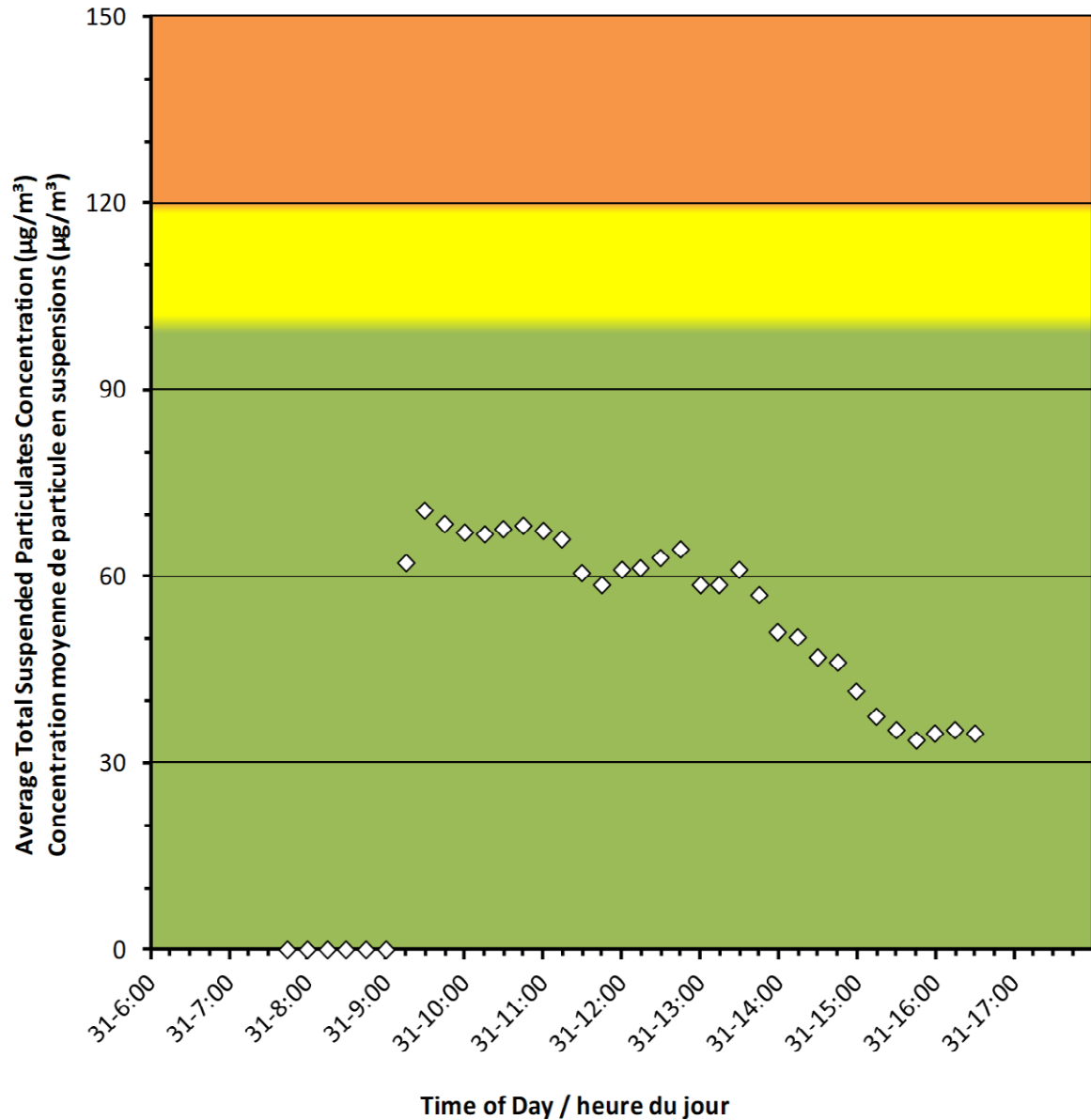
**Daily Statistics/Statistiques journalières**

<b>71</b>	Maximum Concentration ( $\mu\text{g}/\text{m}^3$ ) Concentration maximale ( $\mu\text{g}/\text{m}^3$ )
<b>46</b>	Average Concentration ( $\mu\text{g}/\text{m}^3$ ) Concentration moyenne ( $\mu\text{g}/\text{m}^3$ )

**Notes**

No additional data. Aucune donnée additionnelle.

**Monitor A/Station A**



**Port Granby Project**  
**Daily Dust Monitoring Data**

**Projet de Port Granby**  
**Surveillance journalière des**  
**particules en suspensions**

**2022/01/31**

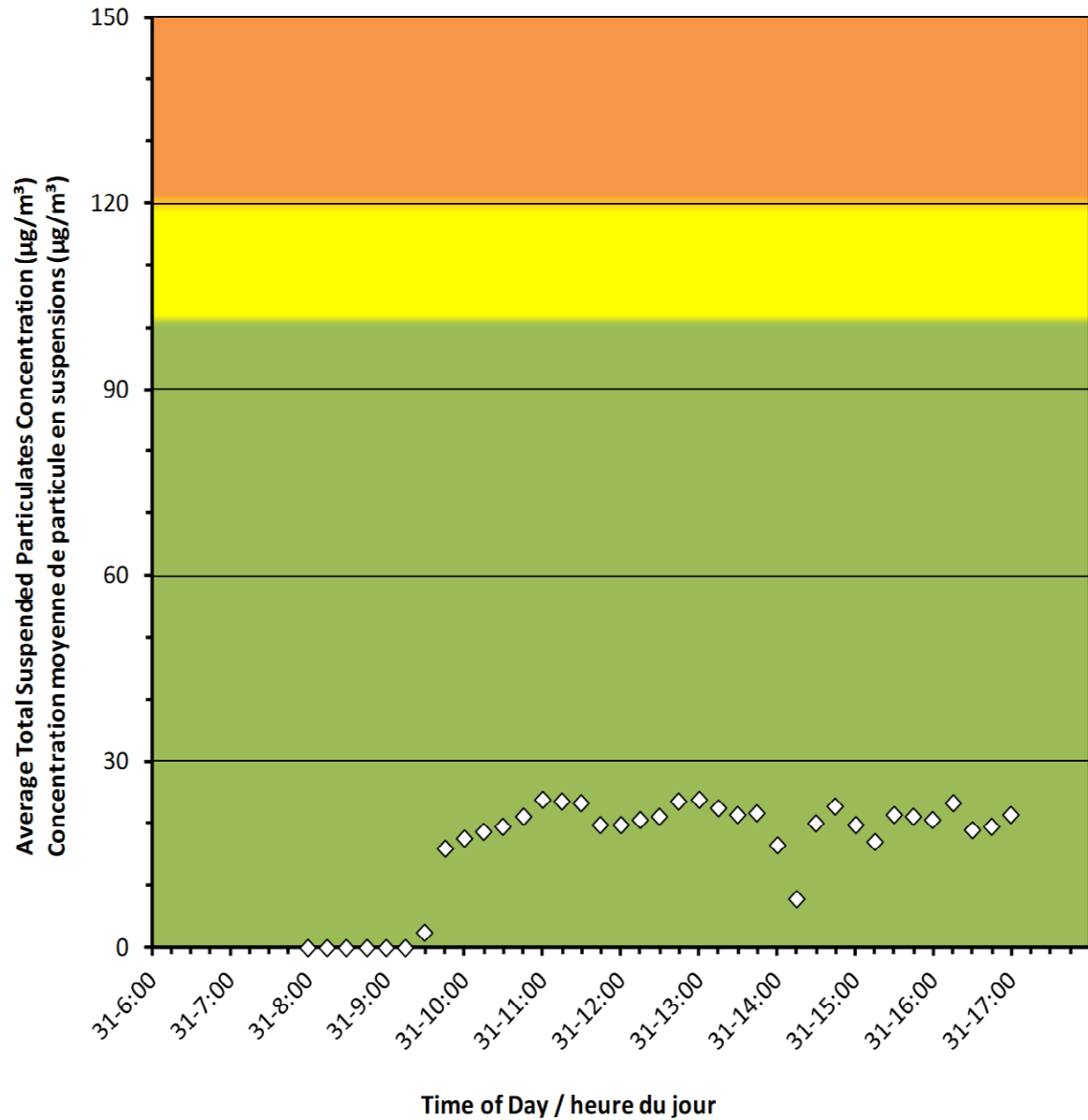
**Daily Statistics/Statistiques journalières**

<b>24</b>	Maximum Concentration ( $\mu\text{g}/\text{m}^3$ ) Concentration maximale ( $\mu\text{g}/\text{m}^3$ )
<b>16</b>	Average Concentration ( $\mu\text{g}/\text{m}^3$ ) Concentration moyenne ( $\mu\text{g}/\text{m}^3$ )

**Notes**

No additional data. Aucune donnée additionnelle.

**Monitor B/Station B**



**Port Granby Project**  
**Daily Dust Monitoring Data**

**Projet de Port Granby**  
**Surveillance journalière des**  
**particules en suspensions**

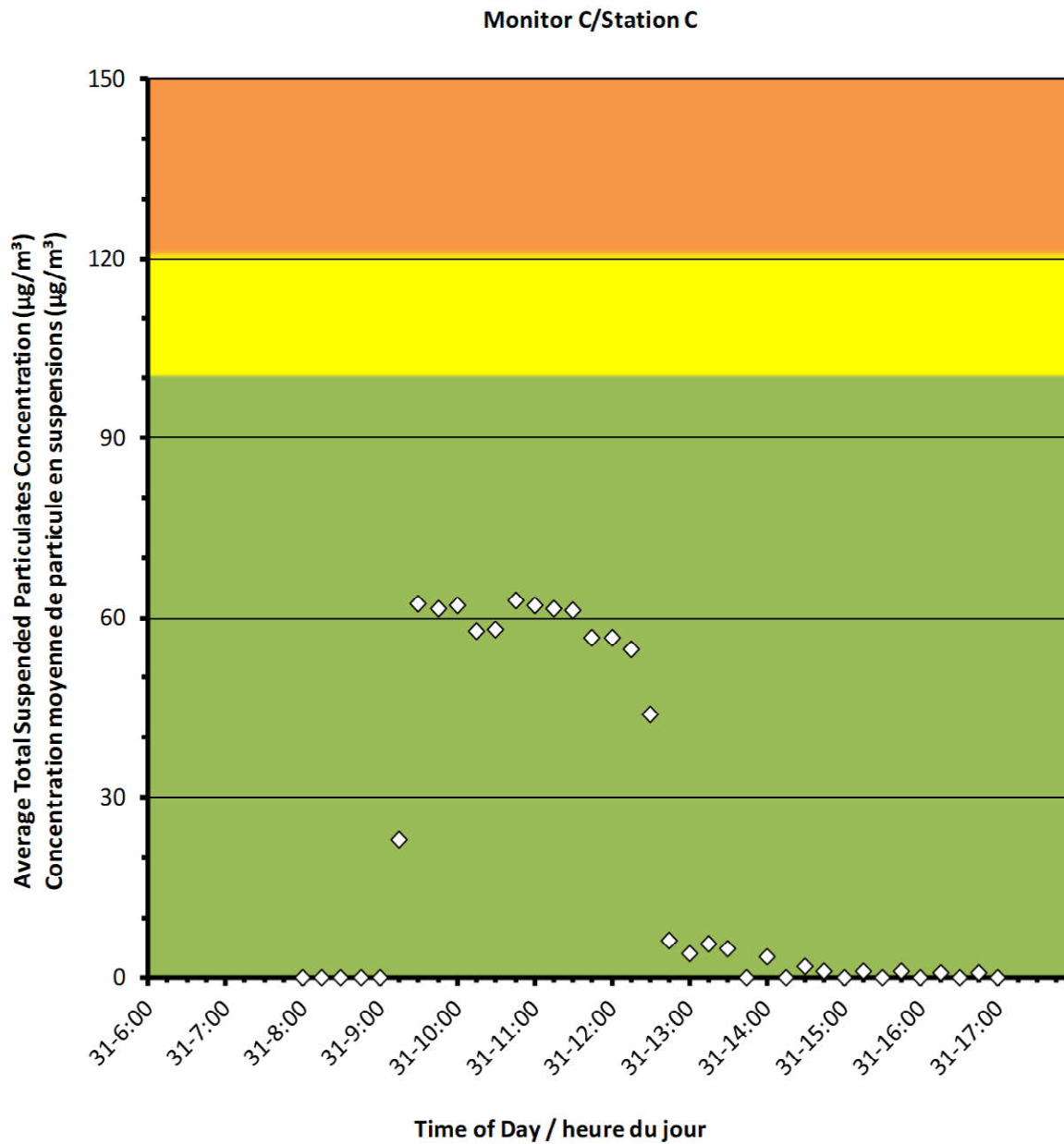
**2022/01/31**

**Daily Statistics/Statistiques journalières**

63	Maximum Concentration ( $\mu\text{g}/\text{m}^3$ ) Concentration maximale ( $\mu\text{g}/\text{m}^3$ )
22	Average Concentration ( $\mu\text{g}/\text{m}^3$ ) Concentration moyenne ( $\mu\text{g}/\text{m}^3$ )

**Notes**

No additional data. Aucune donnée additionnelle.



**Port Granby Project**  
**Daily Dust Monitoring Data**

**Projet de Port Granby**  
**Surveillance journalière des**  
**particules en suspensions**

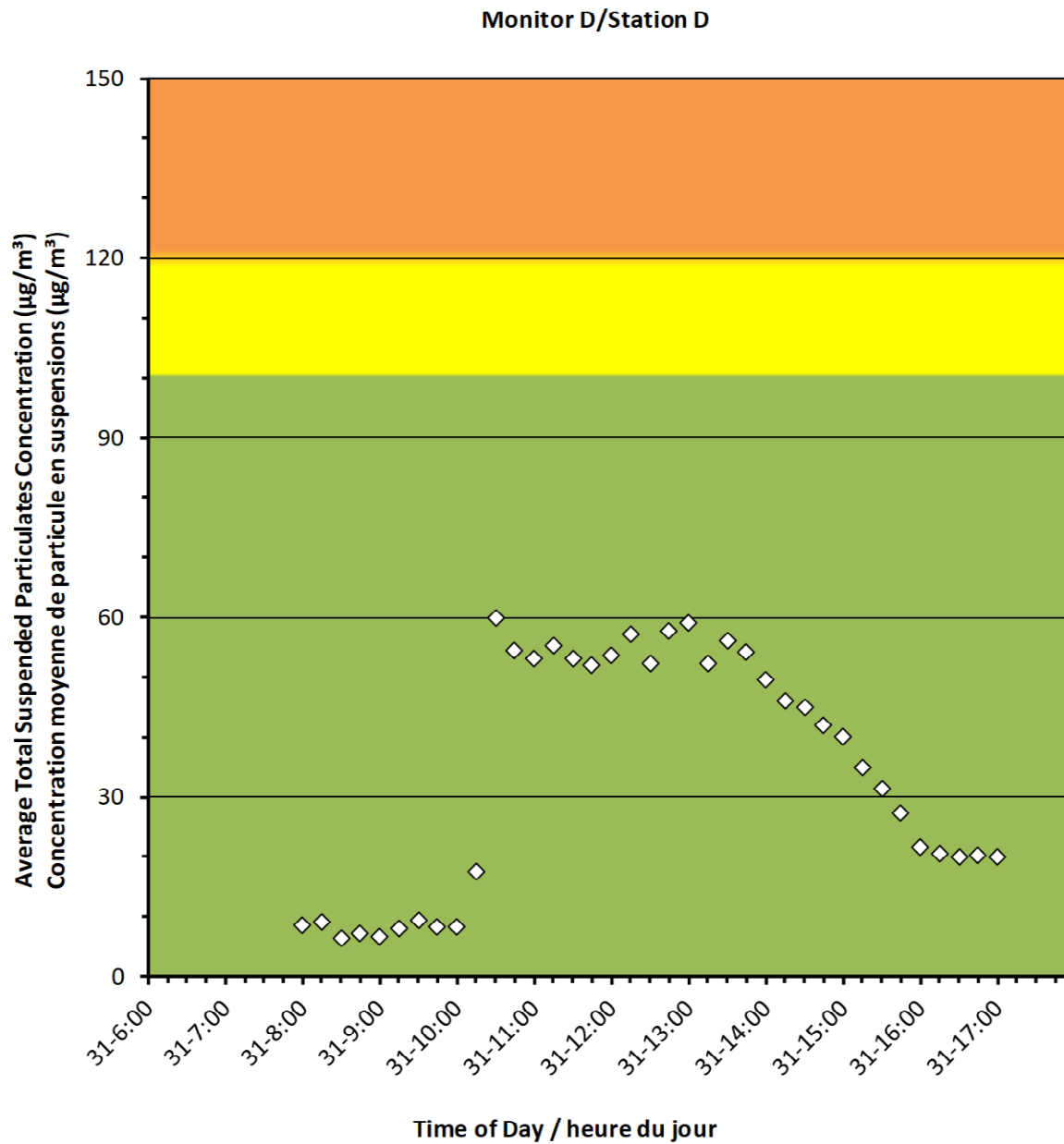
**2022/01/31**

**Daily Statistics/Statistiques journalières**

<b>60</b>	Maximum Concentration ( $\mu\text{g}/\text{m}^3$ ) Concentration maximale ( $\mu\text{g}/\text{m}^3$ )
<b>35</b>	Average Concentration ( $\mu\text{g}/\text{m}^3$ ) Concentration moyenne ( $\mu\text{g}/\text{m}^3$ )

**Notes**

No additional data. Aucune donnée additionnelle.





### Monitor E/Station E

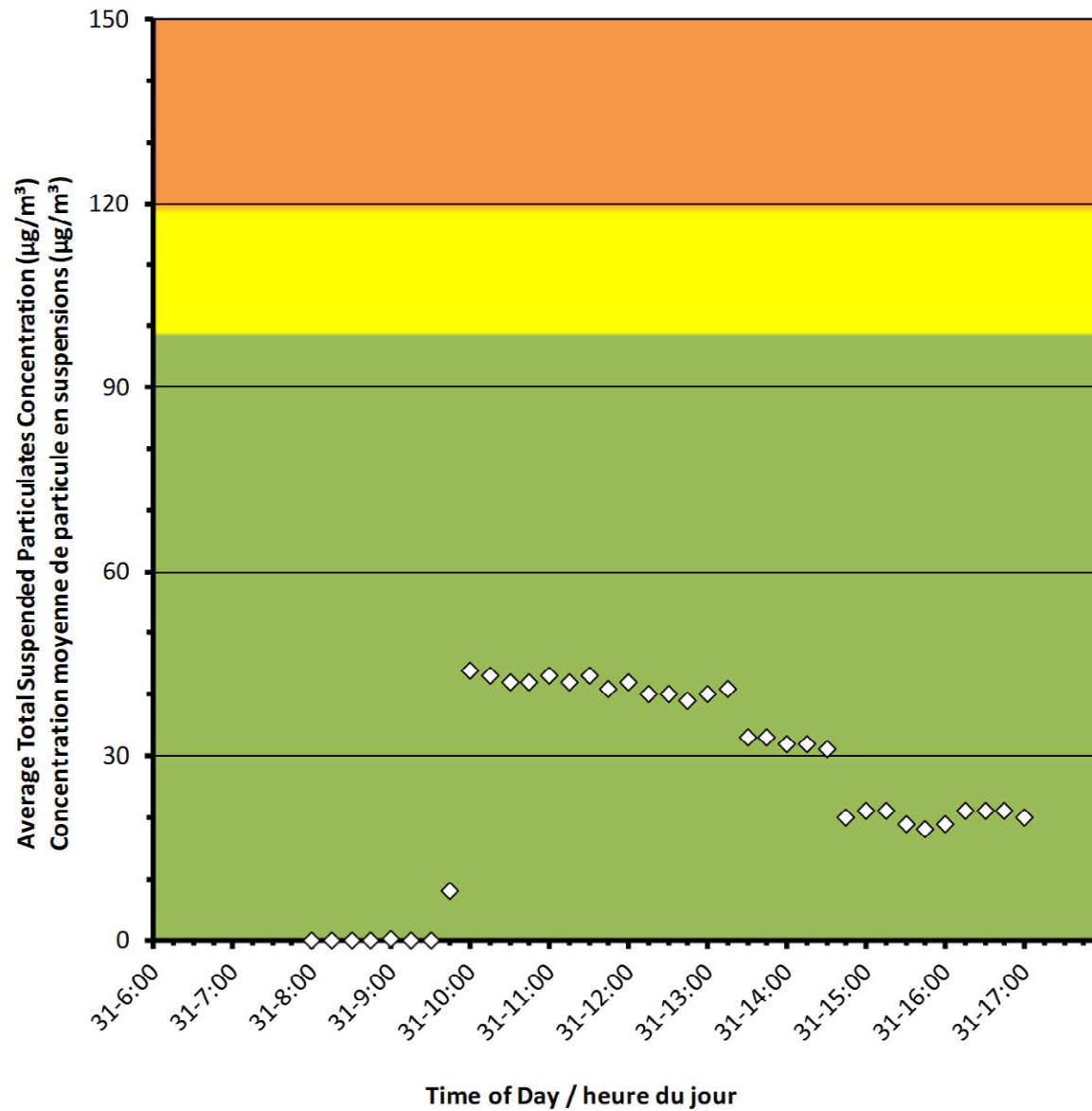
## Port Granby Project Daily Dust Monitoring Data

### Projet de Port Granby Surveillance journalière des particules en suspensions

**2022/01/31**

#### Daily Statistics/Statistiques journalières

<b>44</b>	Maximum Concentration ( $\mu\text{g}/\text{m}^3$ ) Concentration maximale ( $\mu\text{g}/\text{m}^3$ )
<b>26</b>	Average Concentration ( $\mu\text{g}/\text{m}^3$ ) Concentration moyenne ( $\mu\text{g}/\text{m}^3$ )



#### Notes

No additional data. Aucune donnée additionnelle.

**Port Granby Project**  
**Daily Dust Monitoring Data**

**Projet de Port Granby**  
**Surveillance journalière des**  
**particules en suspensions**

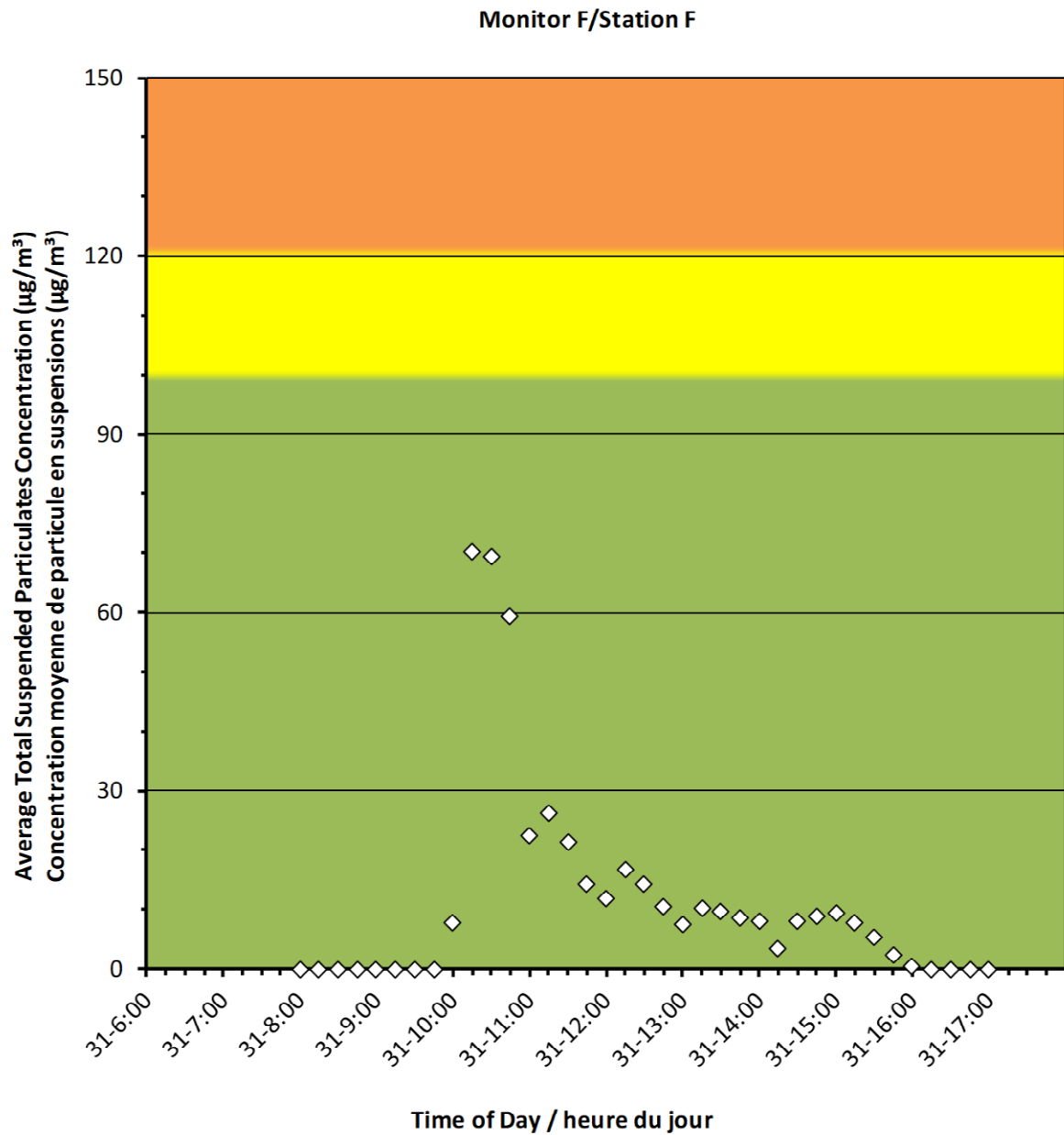
**2022/01/31**

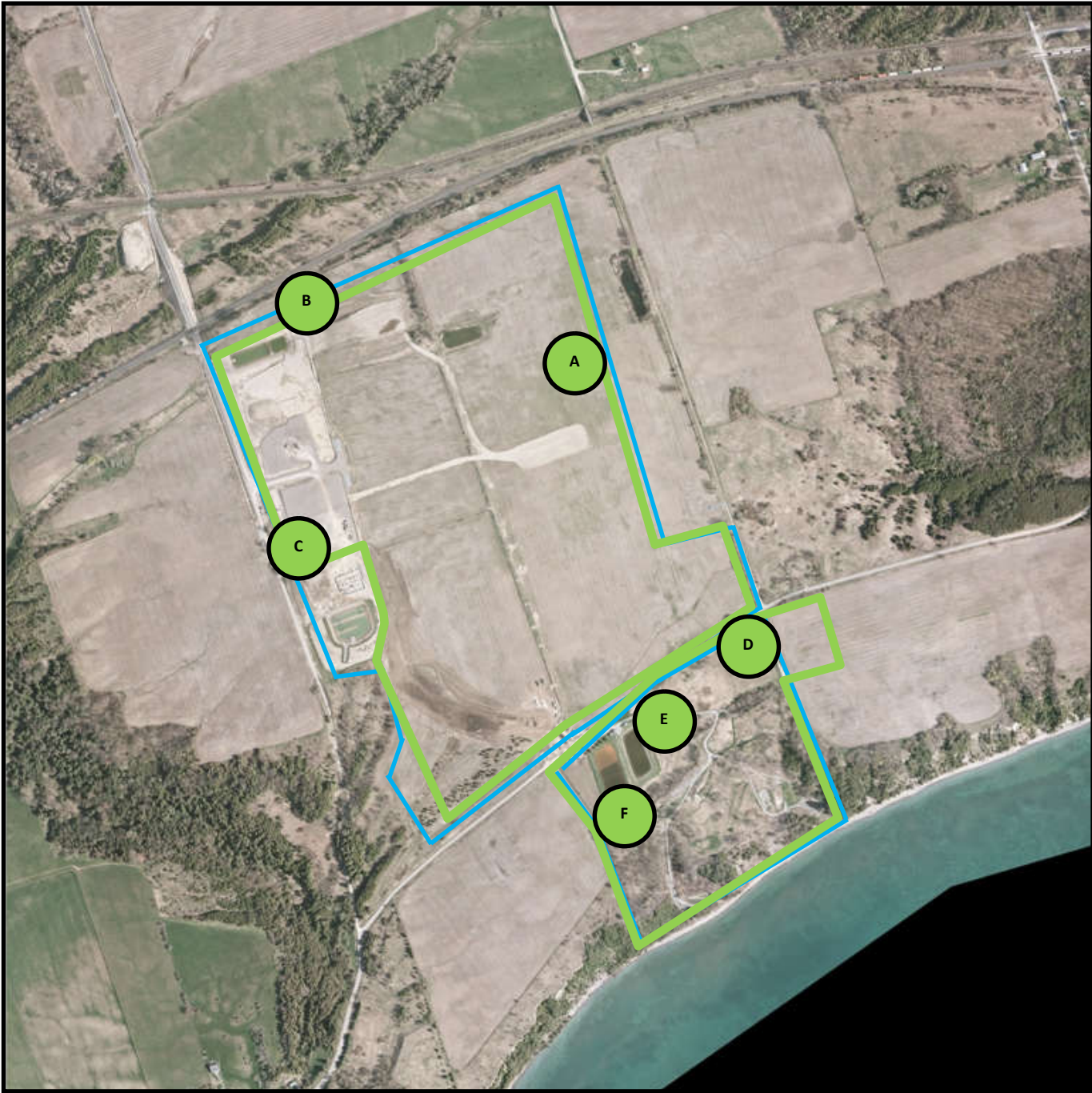
**Daily Statistics/Statistiques journalières**

<b>70</b>	Maximum Concentration ( $\mu\text{g}/\text{m}^3$ ) Concentration maximale ( $\mu\text{g}/\text{m}^3$ )
<b>12</b>	Average Concentration ( $\mu\text{g}/\text{m}^3$ ) Concentration moyenne ( $\mu\text{g}/\text{m}^3$ )

**Notes**

No additional data. Aucune donnée additionnelle.





Canadian Nuclear  
Laboratories

Laboratoires Nucléaires  
Canadiens

### Port Granby Project




### Daily Dust Monitoring Data

### Projet de Port Granby

Surveillance journalière des particules  
en suspensions

**2022/02/01**

#### Legend/Légende

-  Independent Dust Monitoring  
Surveillance indépendante
-  Work Site perimeter  
Périmètre du chantier general.
-  CNL Controlled Area  
Périmètre du site sous le control de  
LCN.



**Port Granby Project**  
**Daily Dust Monitoring Data**

**Projet de Port Granby**  
**Surveillance journalière des**  
**particules en suspensions**

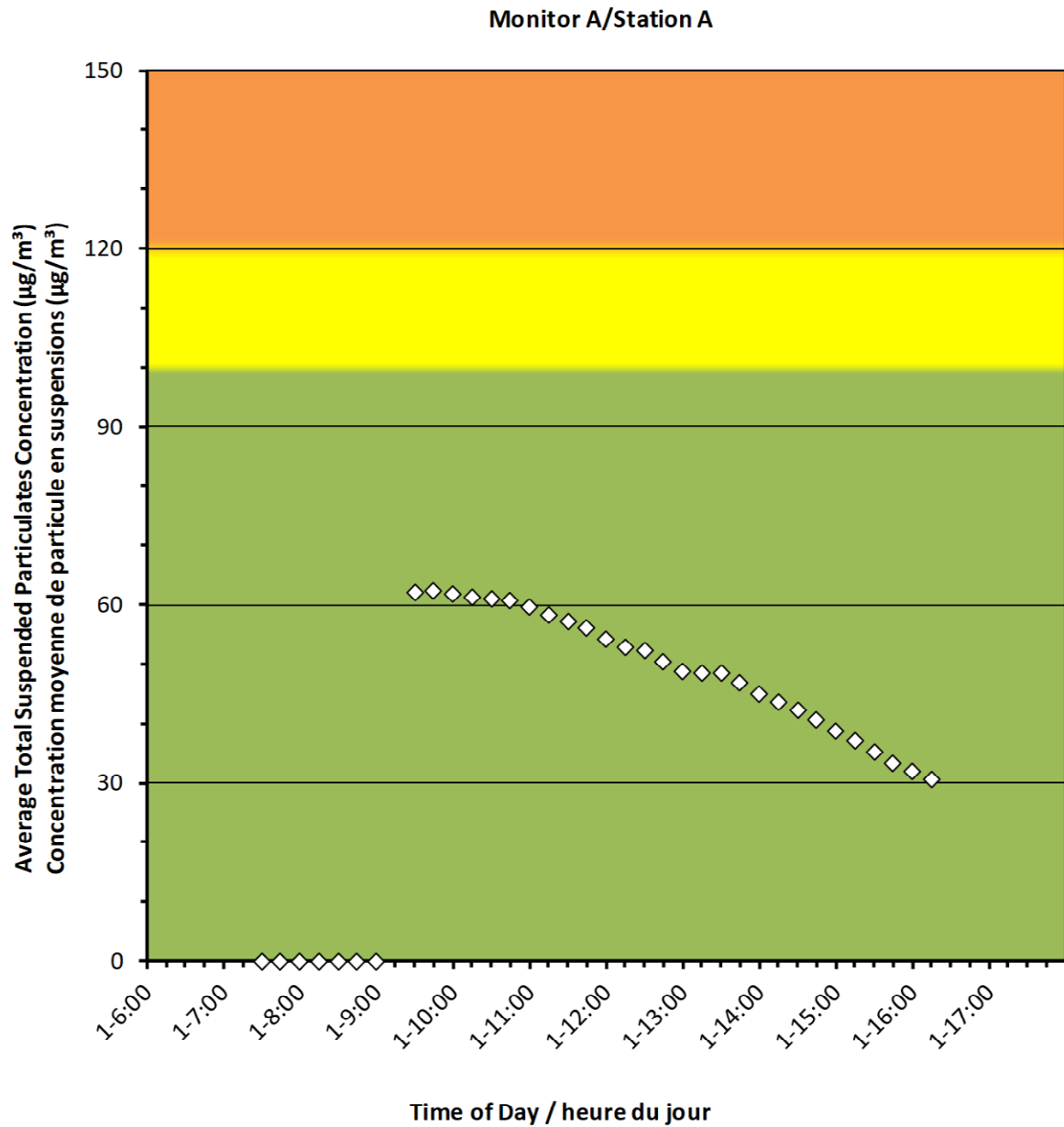
**2022/02/01**

**Daily Statistics/Statistiques journalières**

62	Maximum Concentration ( $\mu\text{g}/\text{m}^3$ ) Concentration maximale ( $\mu\text{g}/\text{m}^3$ )
41	Average Concentration ( $\mu\text{g}/\text{m}^3$ ) Concentration moyenne ( $\mu\text{g}/\text{m}^3$ )

**Notes**

No additional data. Aucune donnée additionnelle.



**Port Granby Project**  
**Daily Dust Monitoring Data**

**Projet de Port Granby**  
**Surveillance journalière des**  
**particules en suspensions**

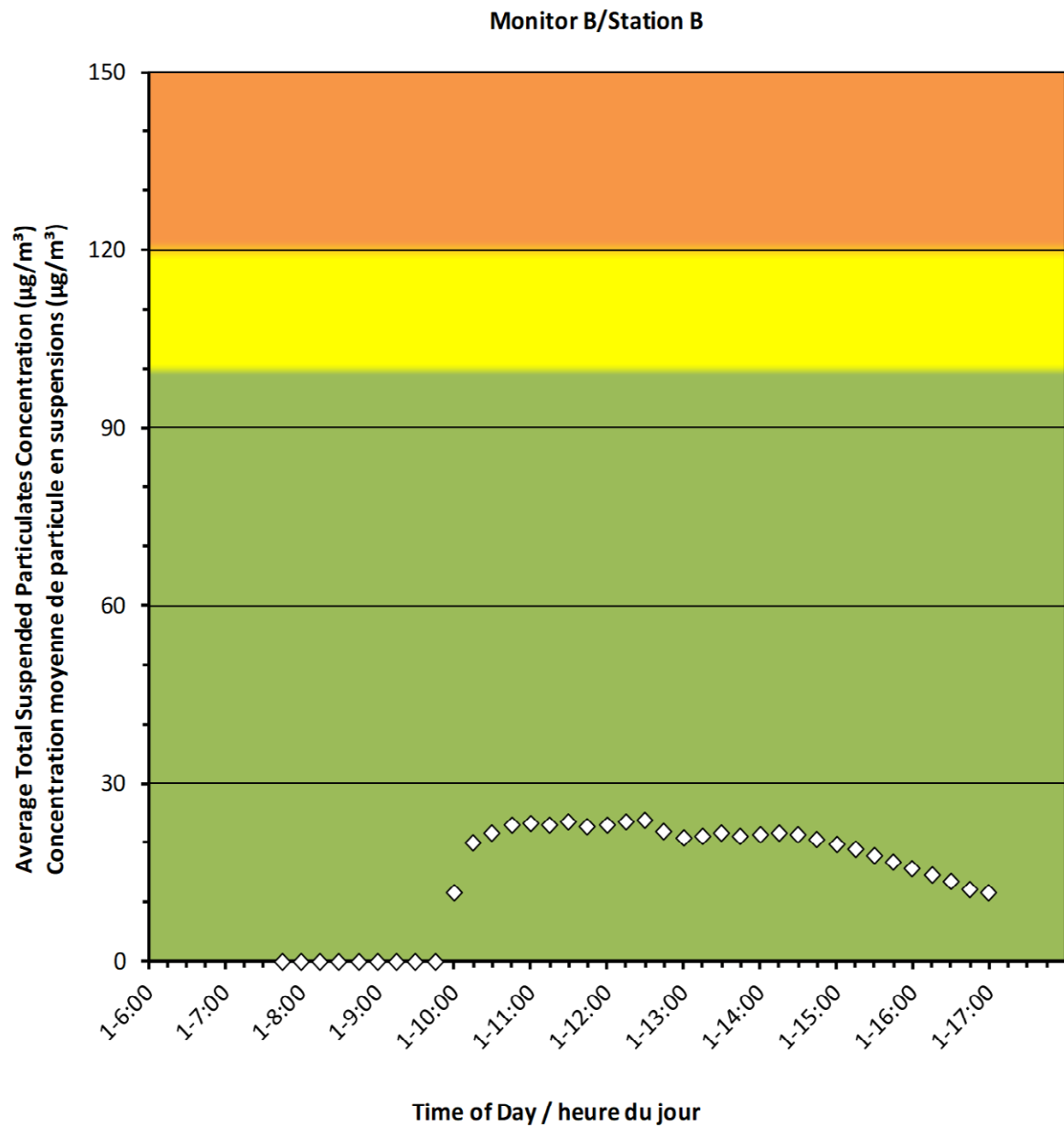
**2022/02/01**

**Daily Statistics/Statistiques journalières**

<b>24</b>	Maximum Concentration ( $\mu\text{g}/\text{m}^3$ ) Concentration maximale ( $\mu\text{g}/\text{m}^3$ )
<b>15</b>	Average Concentration ( $\mu\text{g}/\text{m}^3$ ) Concentration moyenne ( $\mu\text{g}/\text{m}^3$ )

**Notes**

No additional data. Aucune donnée additionnelle.



**Port Granby Project**  
**Daily Dust Monitoring Data**

**Projet de Port Granby**  
**Surveillance journalière des**  
**particules en suspensions**

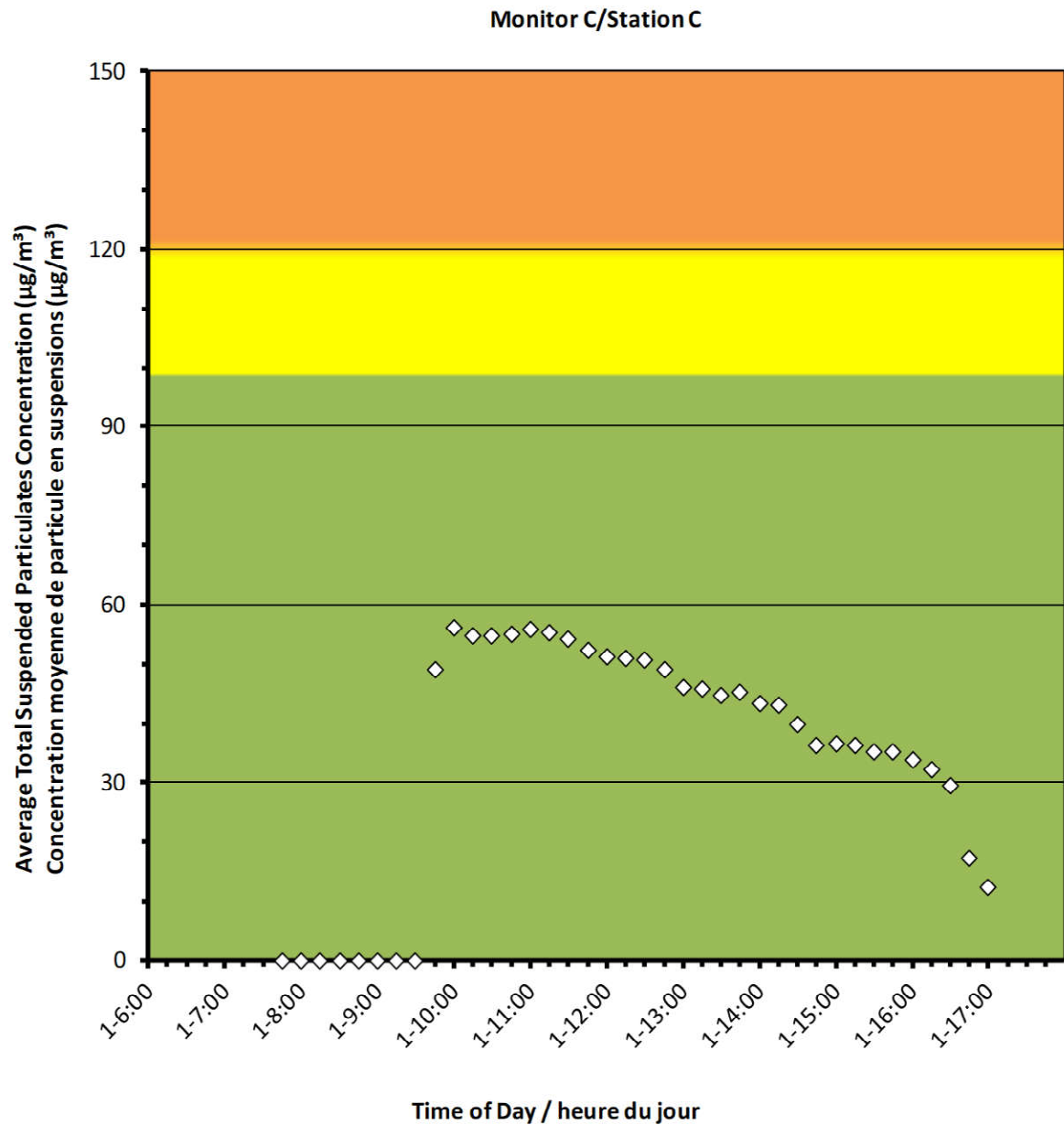
**2022/02/01**

**Daily Statistics/Statistiques journalières**

<b>56</b>	Maximum Concentration ( $\mu\text{g}/\text{m}^3$ ) Concentration maximale ( $\mu\text{g}/\text{m}^3$ )
<b>35</b>	Average Concentration ( $\mu\text{g}/\text{m}^3$ ) Concentration moyenne ( $\mu\text{g}/\text{m}^3$ )

**Notes**

No additional data. Aucune donnée additionnelle.



**Port Granby Project**  
**Daily Dust Monitoring Data**

**Projet de Port Granby**  
**Surveillance journalière des**  
**particules en suspensions**

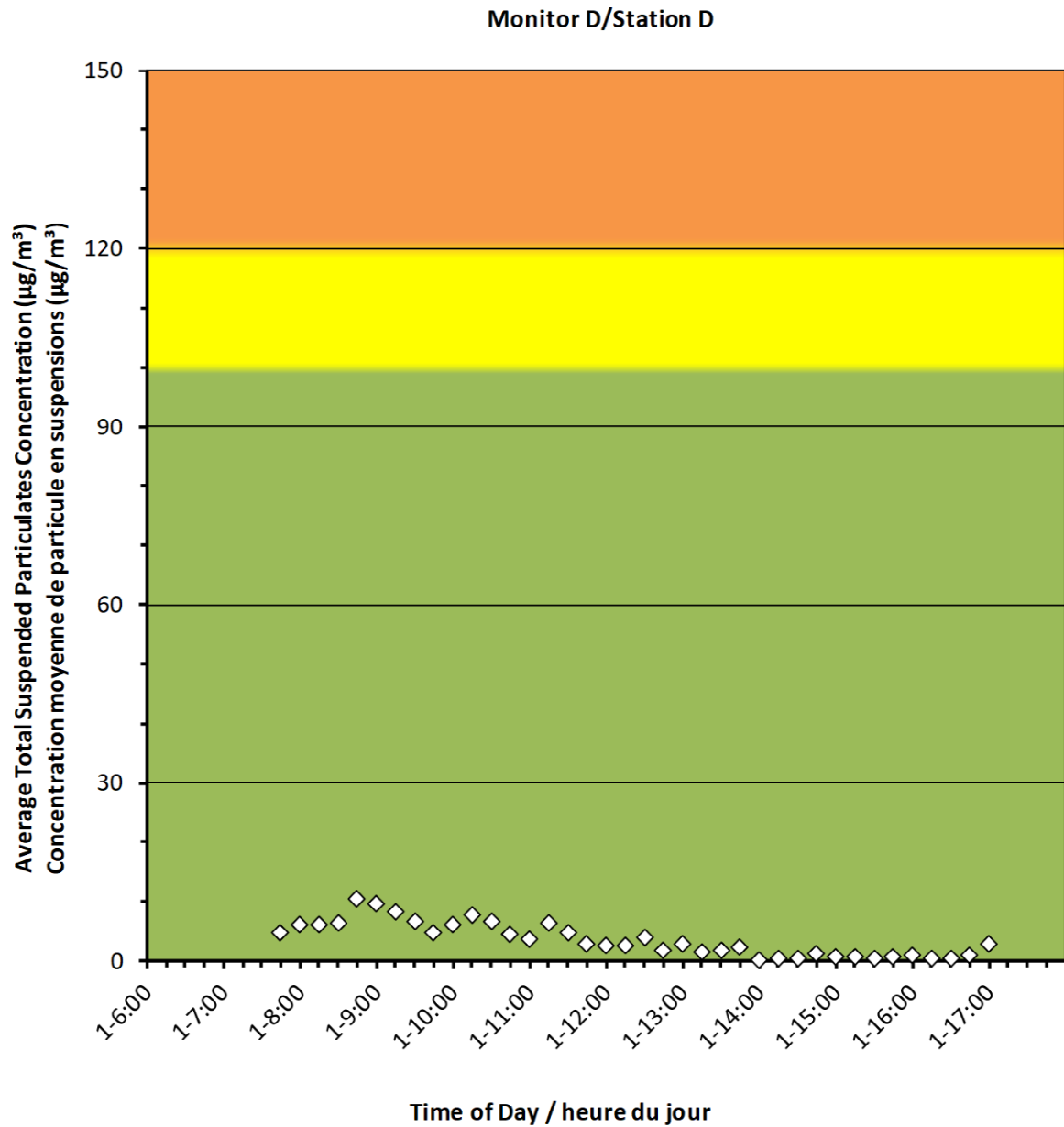
**2022/02/01**

**Daily Statistics/Statistiques journalières**

<b>10</b>	Maximum Concentration ( $\mu\text{g}/\text{m}^3$ ) Concentration maximale ( $\mu\text{g}/\text{m}^3$ )
<b>4</b>	Average Concentration ( $\mu\text{g}/\text{m}^3$ ) Concentration moyenne ( $\mu\text{g}/\text{m}^3$ )

**Notes**

No additional data. Aucune donnée additionnelle.



**Port Granby Project**  
**Daily Dust Monitoring Data**

**Projet de Port Granby**  
**Surveillance journalière des**  
**particules en suspensions**

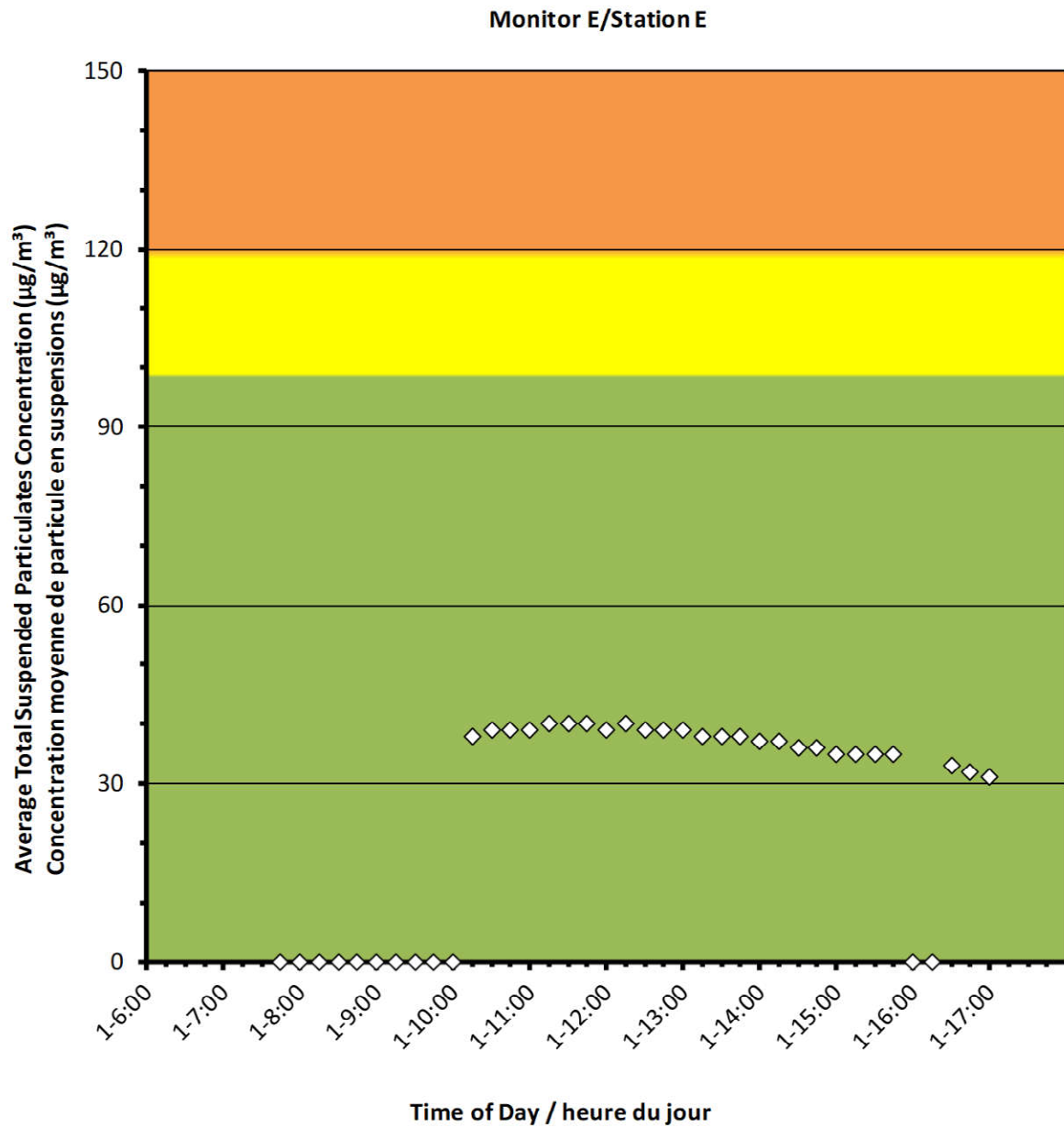
**2022/02/01**

**Daily Statistics/Statistiques journalières**

40	Maximum Concentration ( $\mu\text{g}/\text{m}^3$ ) Concentration maximale ( $\mu\text{g}/\text{m}^3$ )
25	Average Concentration ( $\mu\text{g}/\text{m}^3$ ) Concentration moyenne ( $\mu\text{g}/\text{m}^3$ )

**Notes**

No additional data. Aucune donnée additionnelle.



**Port Granby Project**  
**Daily Dust Monitoring Data**

**Projet de Port Granby**  
**Surveillance journalière des**  
**particules en suspensions**

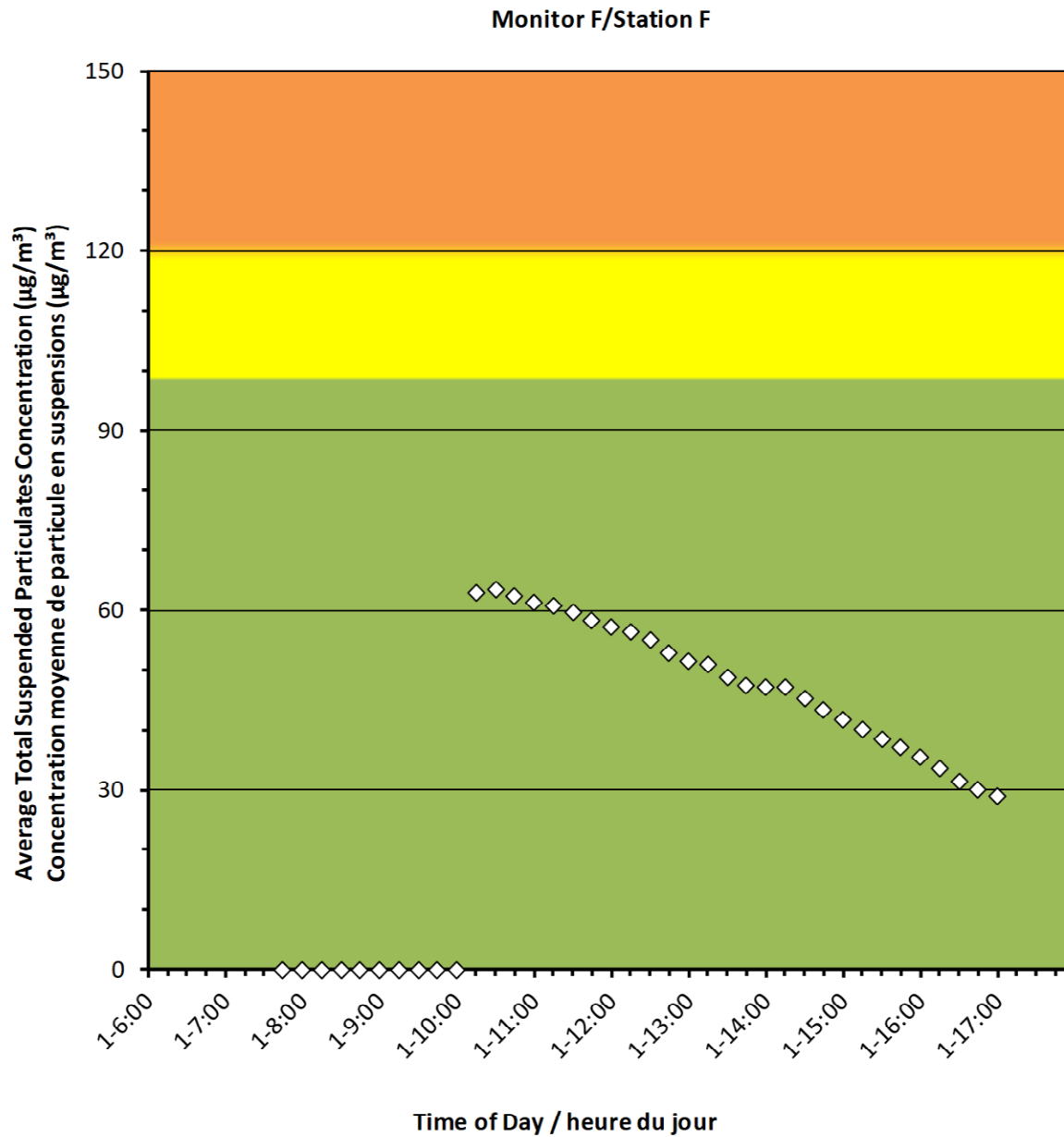
**2022/02/01**

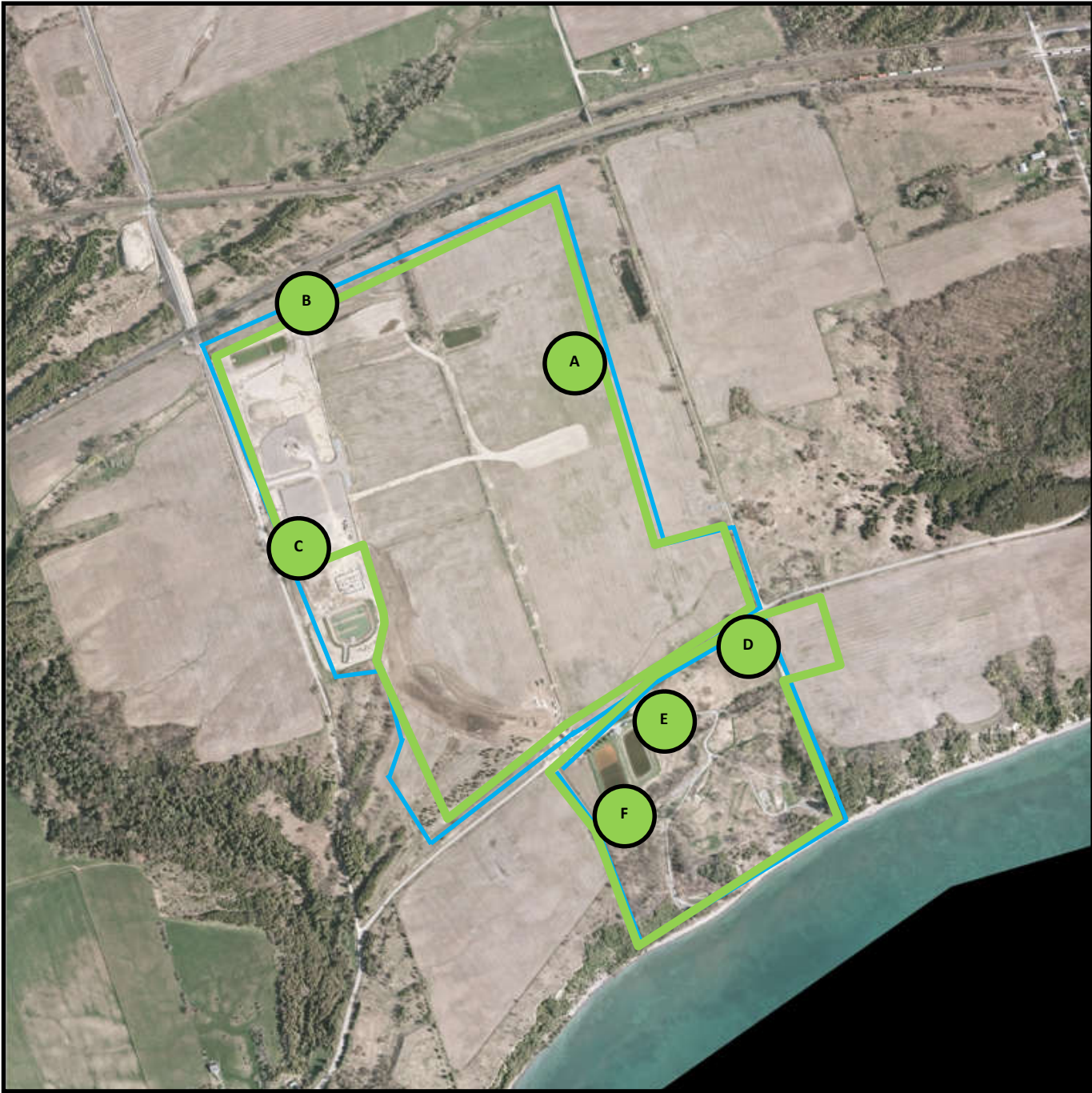
**Daily Statistics/Statistiques journalières**

<b>63</b>	Maximum Concentration ( $\mu\text{g}/\text{m}^3$ ) Concentration maximale ( $\mu\text{g}/\text{m}^3$ )
<b>36</b>	Average Concentration ( $\mu\text{g}/\text{m}^3$ ) Concentration moyenne ( $\mu\text{g}/\text{m}^3$ )

**Notes**

No additional data. Aucune donnée additionnelle.





Canadian Nuclear  
Laboratories

Laboratoires Nucléaires  
Canadiens

### Port Granby Project




### Daily Dust Monitoring Data

### Projet de Port Granby

Surveillance journalière des particules  
en suspensions

**2022/02/02**

#### Legend/Légende

-  Independent Dust Monitoring  
Surveillance indépendante
-  Work Site perimeter  
Périmètre du chantier general.
-  CNL Controlled Area  
Périmètre du site sous le control de  
LCN.

**Port Granby Project**  
**Daily Dust Monitoring Data**

**Projet de Port Granby**  
**Surveillance journalière des**  
**particules en suspensions**

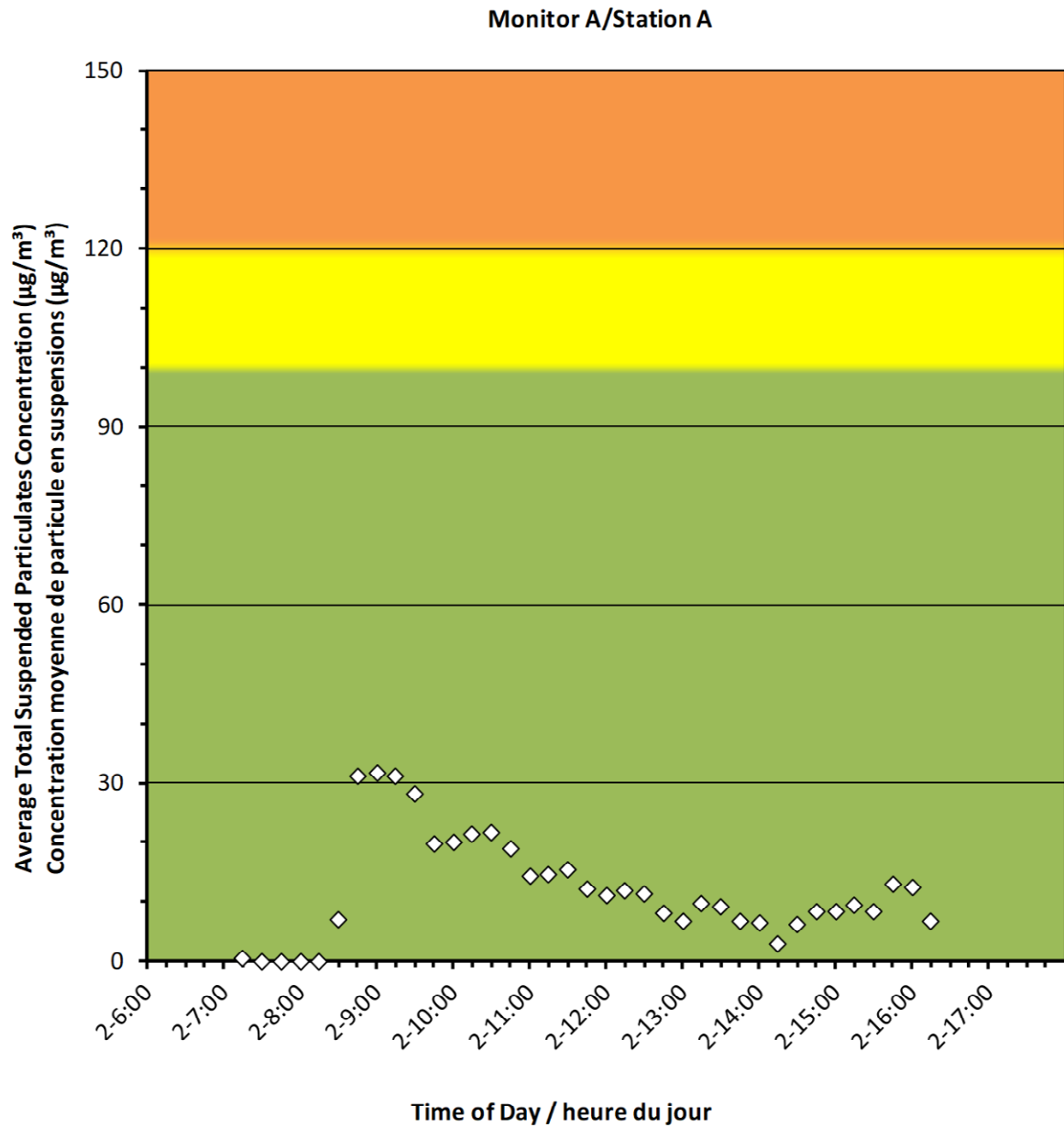
**2022/02/02**

**Daily Statistics/Statistiques journalières**

<b>32</b>	Maximum Concentration ( $\mu\text{g}/\text{m}^3$ ) Concentration maximale ( $\mu\text{g}/\text{m}^3$ )
<b>12</b>	Average Concentration ( $\mu\text{g}/\text{m}^3$ ) Concentration moyenne ( $\mu\text{g}/\text{m}^3$ )

**Notes**

No additional data. Aucune donnée additionnelle.





**Port Granby Project**  
**Daily Dust Monitoring Data**

**Projet de Port Granby**  
**Surveillance journalière des**  
**particules en suspensions**

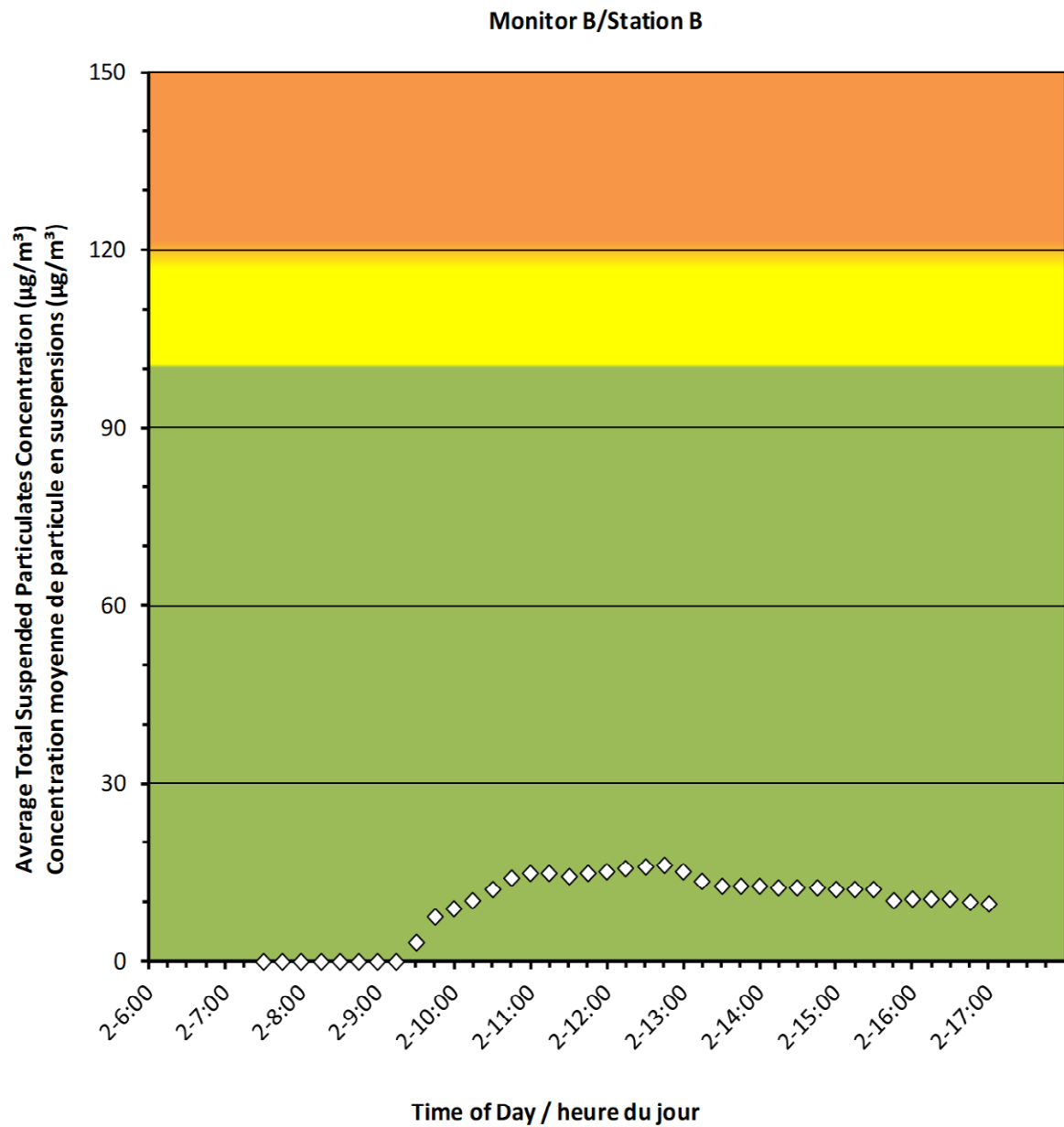
**2022/02/02**

**Daily Statistics/Statistiques journalières**

<b>16</b>	Maximum Concentration ( $\mu\text{g}/\text{m}^3$ ) Concentration maximale ( $\mu\text{g}/\text{m}^3$ )
<b>10</b>	Average Concentration ( $\mu\text{g}/\text{m}^3$ ) Concentration moyenne ( $\mu\text{g}/\text{m}^3$ )

**Notes**

No additional data. Aucune donnée additionnelle.



**Port Granby Project**  
**Daily Dust Monitoring Data**

**Projet de Port Granby**  
**Surveillance journalière des**  
**particules en suspensions**

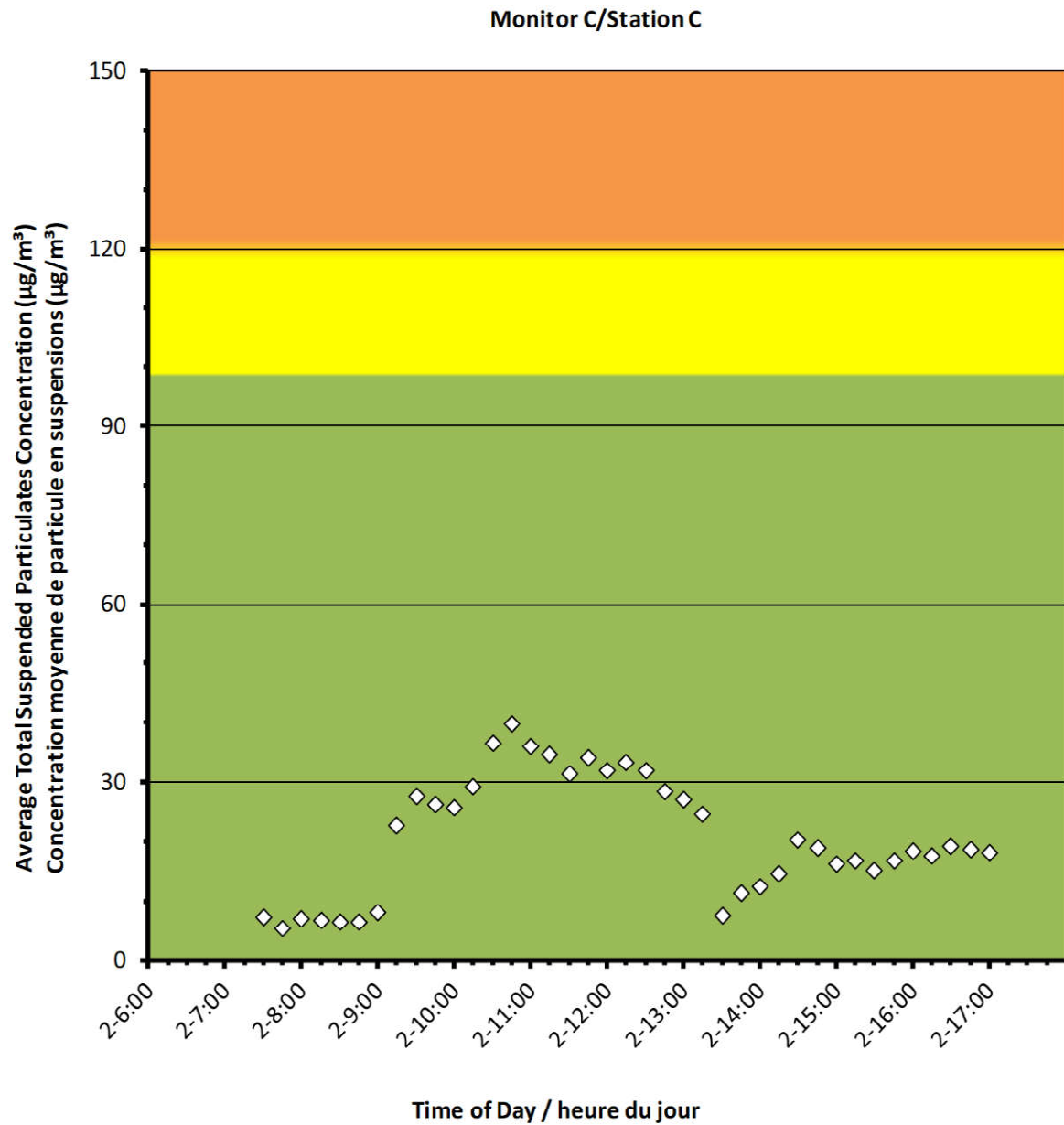
**2022/02/02**

**Daily Statistics/Statistiques journalières**

<b>40</b>	Maximum Concentration ( $\mu\text{g}/\text{m}^3$ ) Concentration maximale ( $\mu\text{g}/\text{m}^3$ )
<b>22</b>	Average Concentration ( $\mu\text{g}/\text{m}^3$ ) Concentration moyenne ( $\mu\text{g}/\text{m}^3$ )

**Notes**

No additional data. Aucune donnée additionnelle.





**Port Granby Project**  
**Daily Dust Monitoring Data**

**Projet de Port Granby**  
**Surveillance journalière des**  
**particules en suspensions**

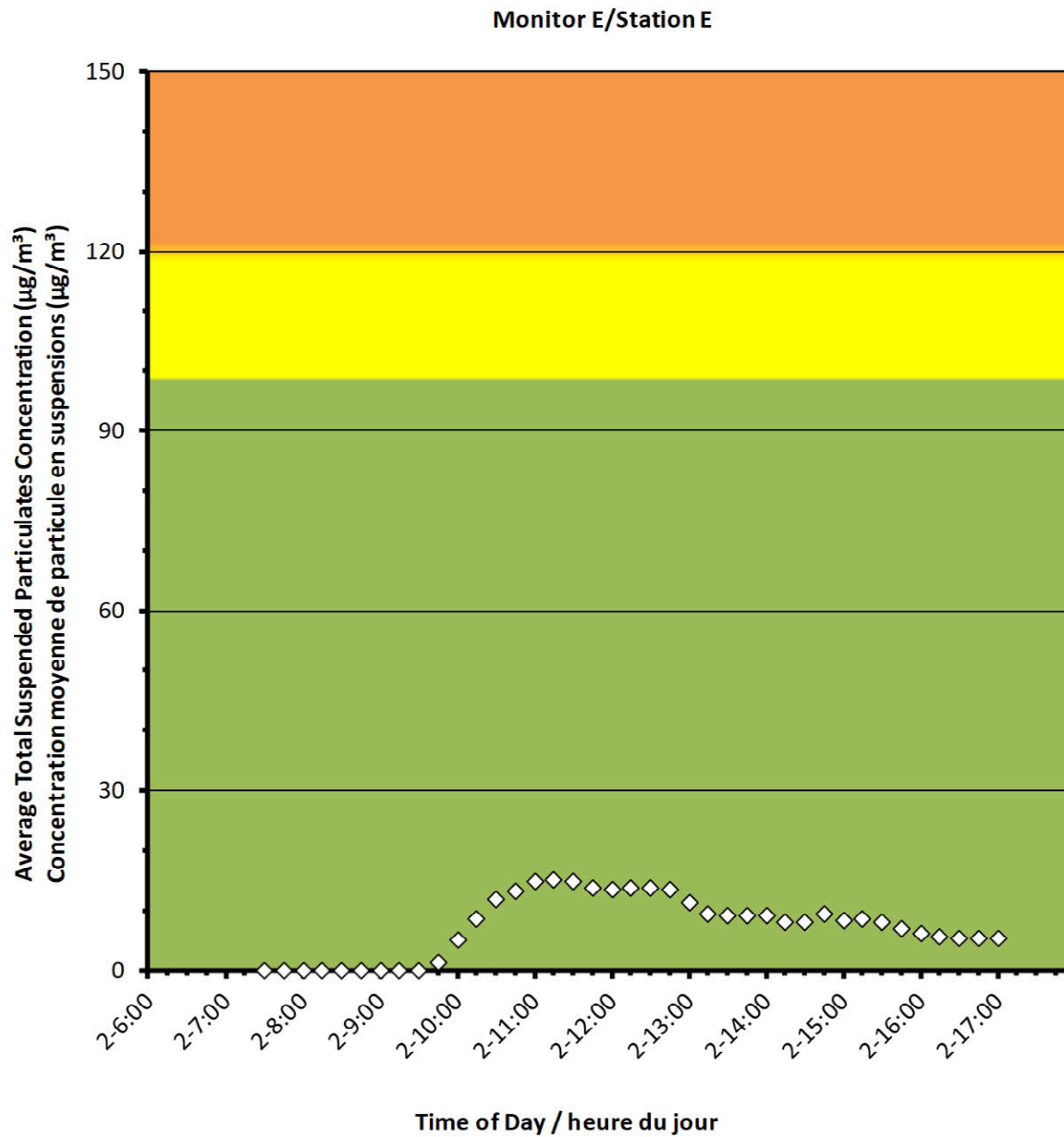
**2022/02/02**

**Daily Statistics/Statistiques journalières**

<b>15</b>	Maximum Concentration ( $\mu\text{g}/\text{m}^3$ ) Concentration maximale ( $\mu\text{g}/\text{m}^3$ )
<b>8</b>	Average Concentration ( $\mu\text{g}/\text{m}^3$ ) Concentration moyenne ( $\mu\text{g}/\text{m}^3$ )

**Notes**

No additional data. Aucune donnée additionnelle.





## Port Granby Project Daily Dust Monitoring Data

### Projet de Port Granby Surveillance journalière des particules en suspensions

**2022/02/02**

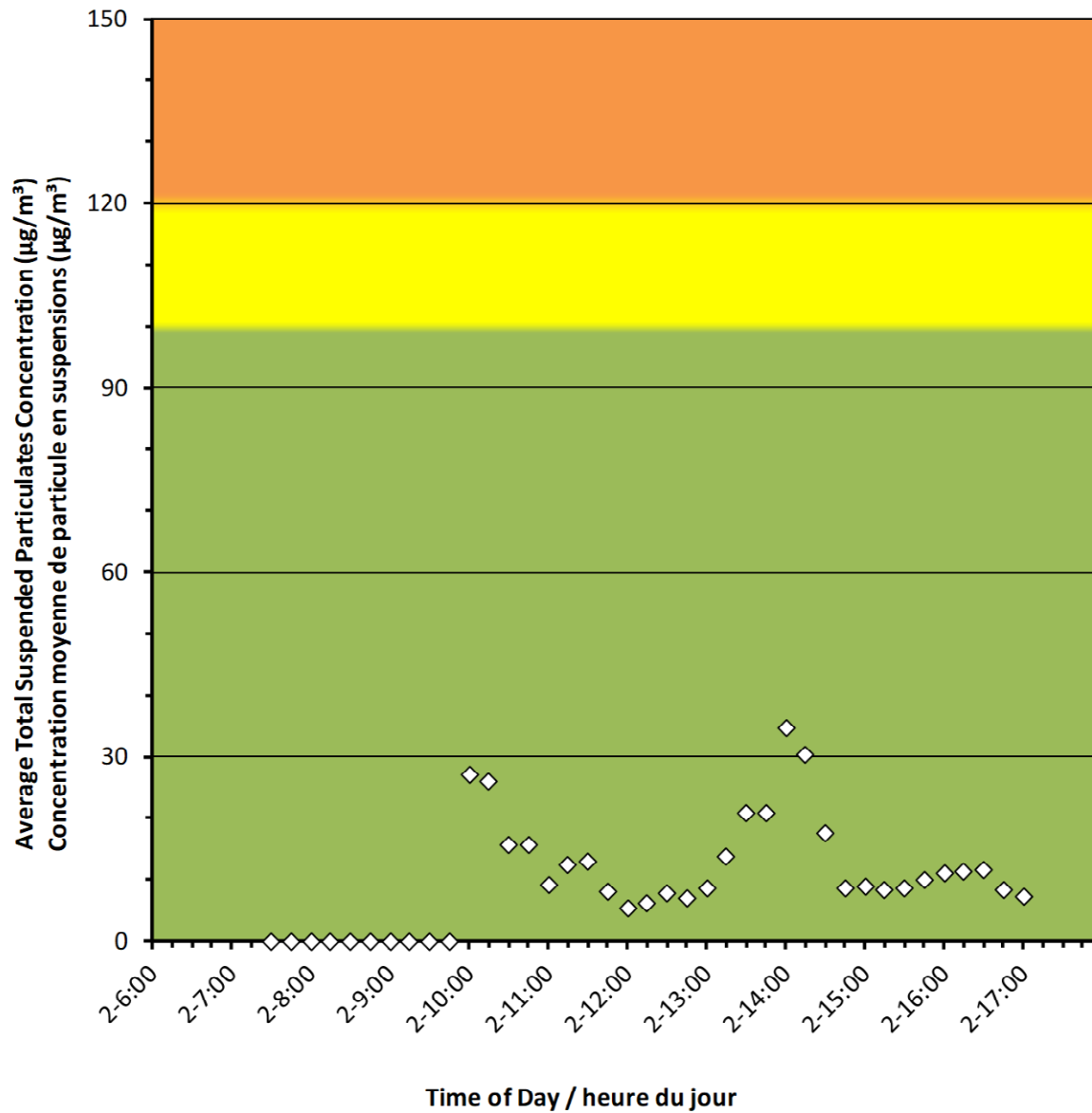
#### Daily Statistics/Statistiques journalières

<b>35</b>	Maximum Concentration ( $\mu\text{g}/\text{m}^3$ ) Concentration maximale ( $\mu\text{g}/\text{m}^3$ )
<b>11</b>	Average Concentration ( $\mu\text{g}/\text{m}^3$ ) Concentration moyenne ( $\mu\text{g}/\text{m}^3$ )

#### Notes

No additional data. Aucune donnée additionnelle.

Monitor F/Station F





Canadian Nuclear  
Laboratories

Laboratoires Nucléaires  
Canadiens

### Port Granby Project




### Daily Dust Monitoring Data

### Projet de Port Granby

### Surveillance journalière des particules en suspensions

**2022/02/03**

#### Legend/Légende

-  Independent Dust Monitoring  
Surveillance indépendante
-  Work Site perimeter  
Périètre du chantier general.
-  CNL Controlled Area  
Périètre du site sous le control de  
LCN.

**Port Granby Project**  
**Daily Dust Monitoring Data**

**Projet de Port Granby**  
**Surveillance journalière des**  
**particules en suspensions**

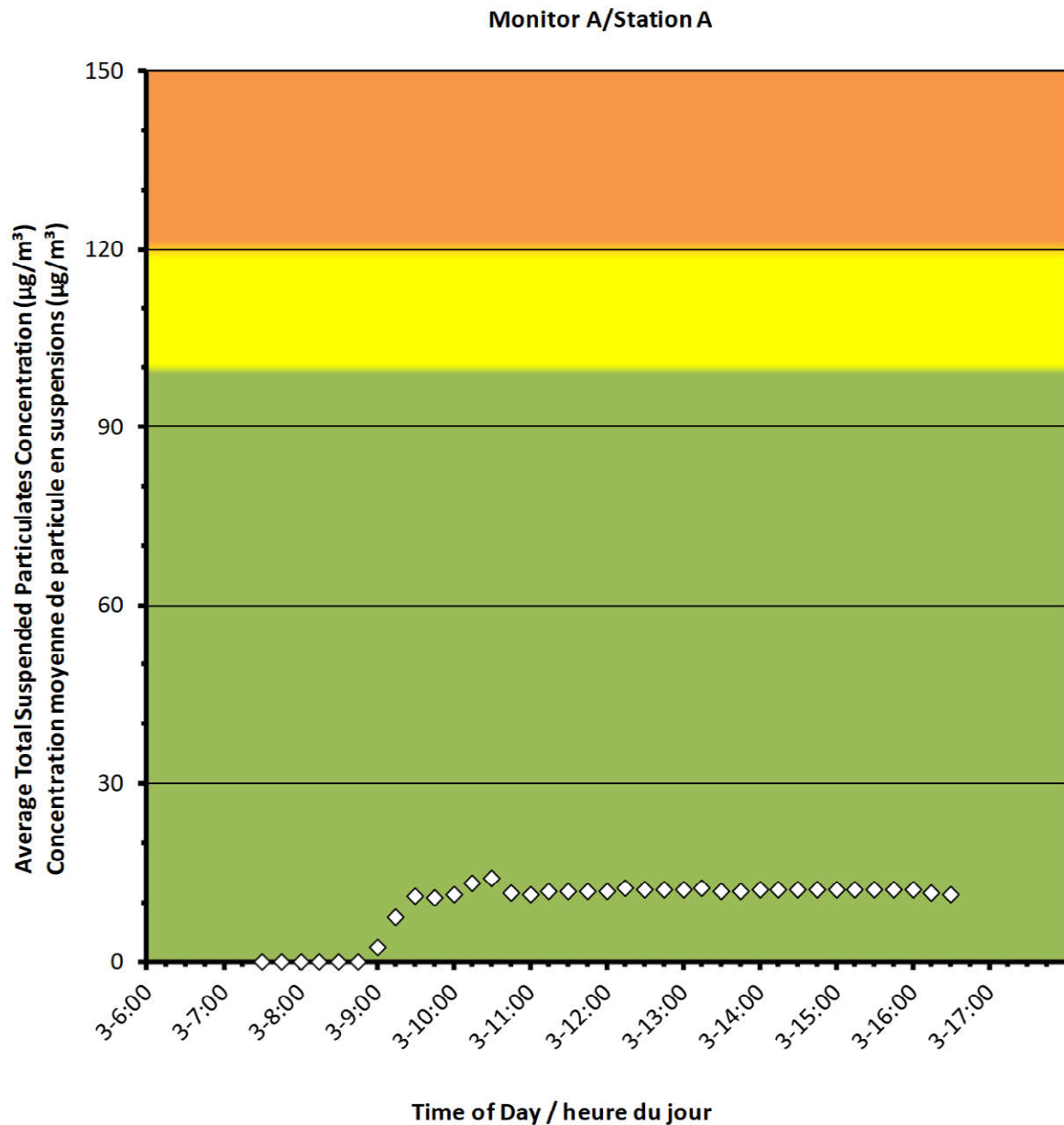
**2022/02/03**

**Daily Statistics/Statistiques journalières**

<b>14</b>	Maximum Concentration ( $\mu\text{g}/\text{m}^3$ ) Concentration maximale ( $\mu\text{g}/\text{m}^3$ )
<b>9</b>	Average Concentration ( $\mu\text{g}/\text{m}^3$ ) Concentration moyenne ( $\mu\text{g}/\text{m}^3$ )

**Notes**

No additional data. Aucune donnée additionnelle.





## Port Granby Project Daily Dust Monitoring Data

### Projet de Port Granby Surveillance journalière des particules en suspensions

**2022/02/03**

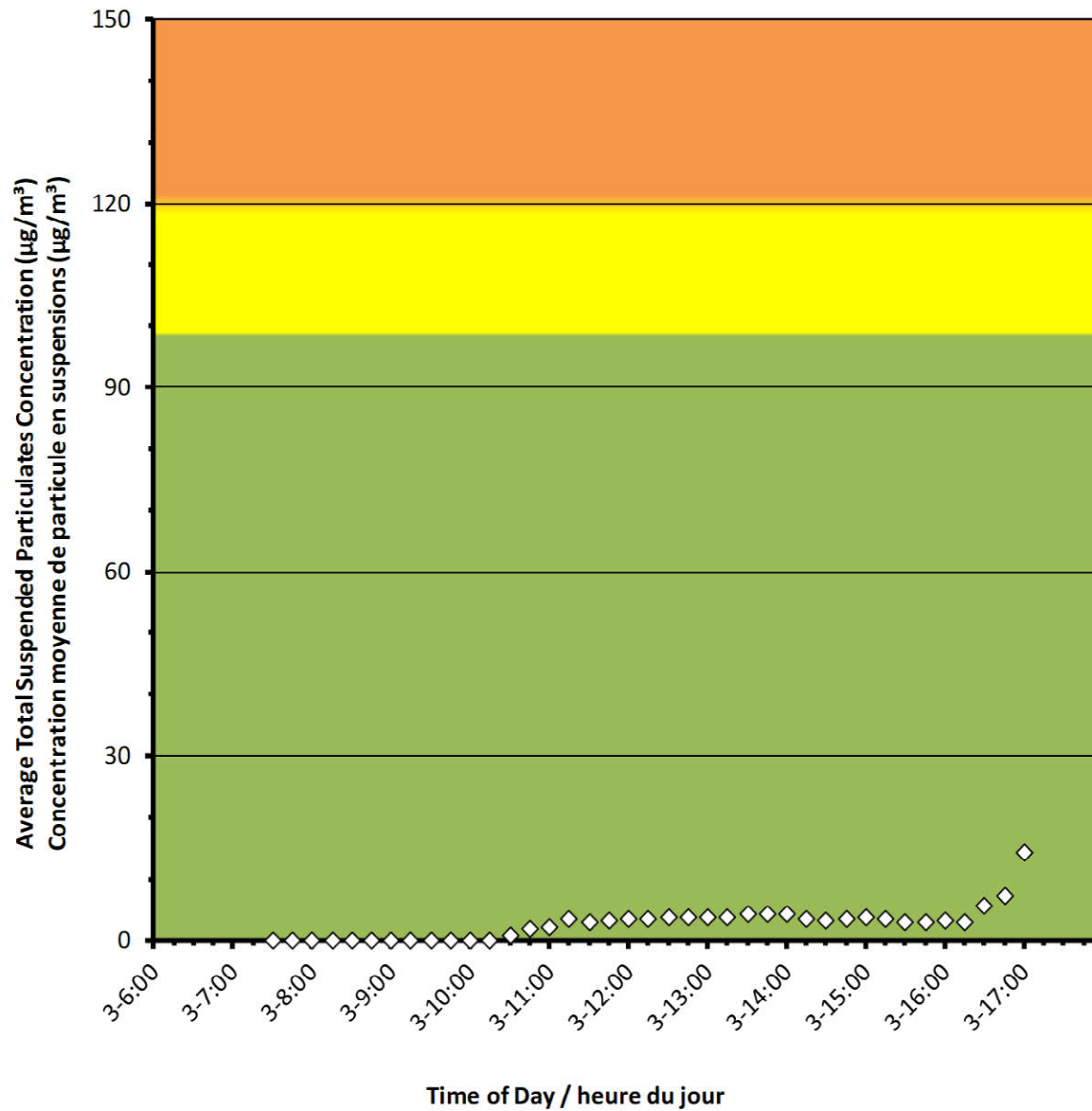
#### Daily Statistics/Statistiques journalières

<b>14</b>	Maximum Concentration ( $\mu\text{g}/\text{m}^3$ ) Concentration maximale ( $\mu\text{g}/\text{m}^3$ )
<b>3</b>	Average Concentration ( $\mu\text{g}/\text{m}^3$ ) Concentration moyenne ( $\mu\text{g}/\text{m}^3$ )

#### Notes

No additional data. Aucune donnée additionnelle.

Monitor B/Station B







## Port Granby Project Daily Dust Monitoring Data

### Projet de Port Granby Surveillance journalière des particules en suspensions

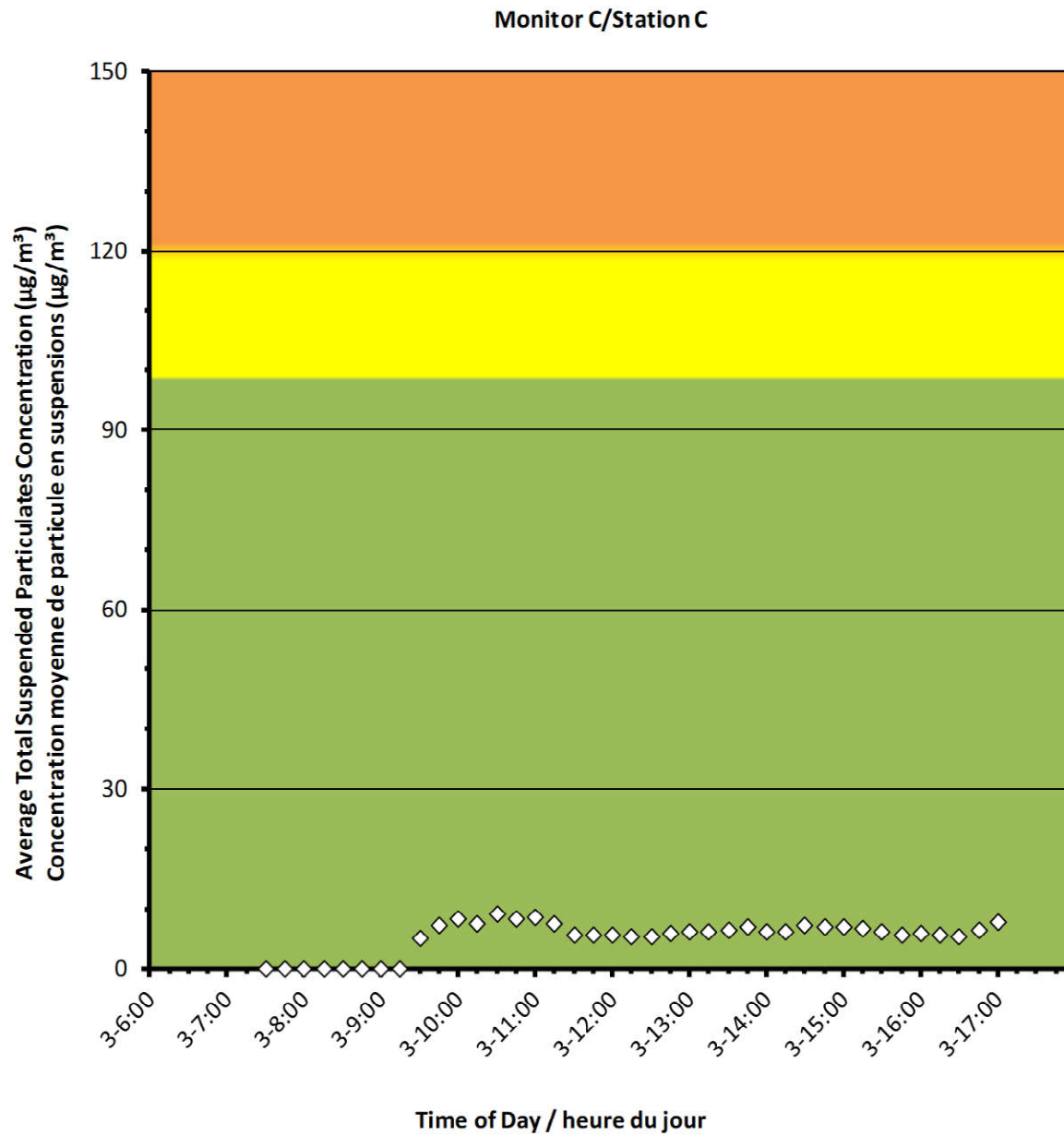
**2022/02/03**

#### Daily Statistics/Statistiques journalières

<b>9</b>	Maximum Concentration ( $\mu\text{g}/\text{m}^3$ ) Concentration maximale ( $\mu\text{g}/\text{m}^3$ )
<b>5</b>	Average Concentration ( $\mu\text{g}/\text{m}^3$ ) Concentration moyenne ( $\mu\text{g}/\text{m}^3$ )

#### Notes

No additional data. Aucune donnée  
additionnelle.





## Port Granby Project Daily Dust Monitoring Data

### Projet de Port Granby Surveillance journalière des particules en suspensions

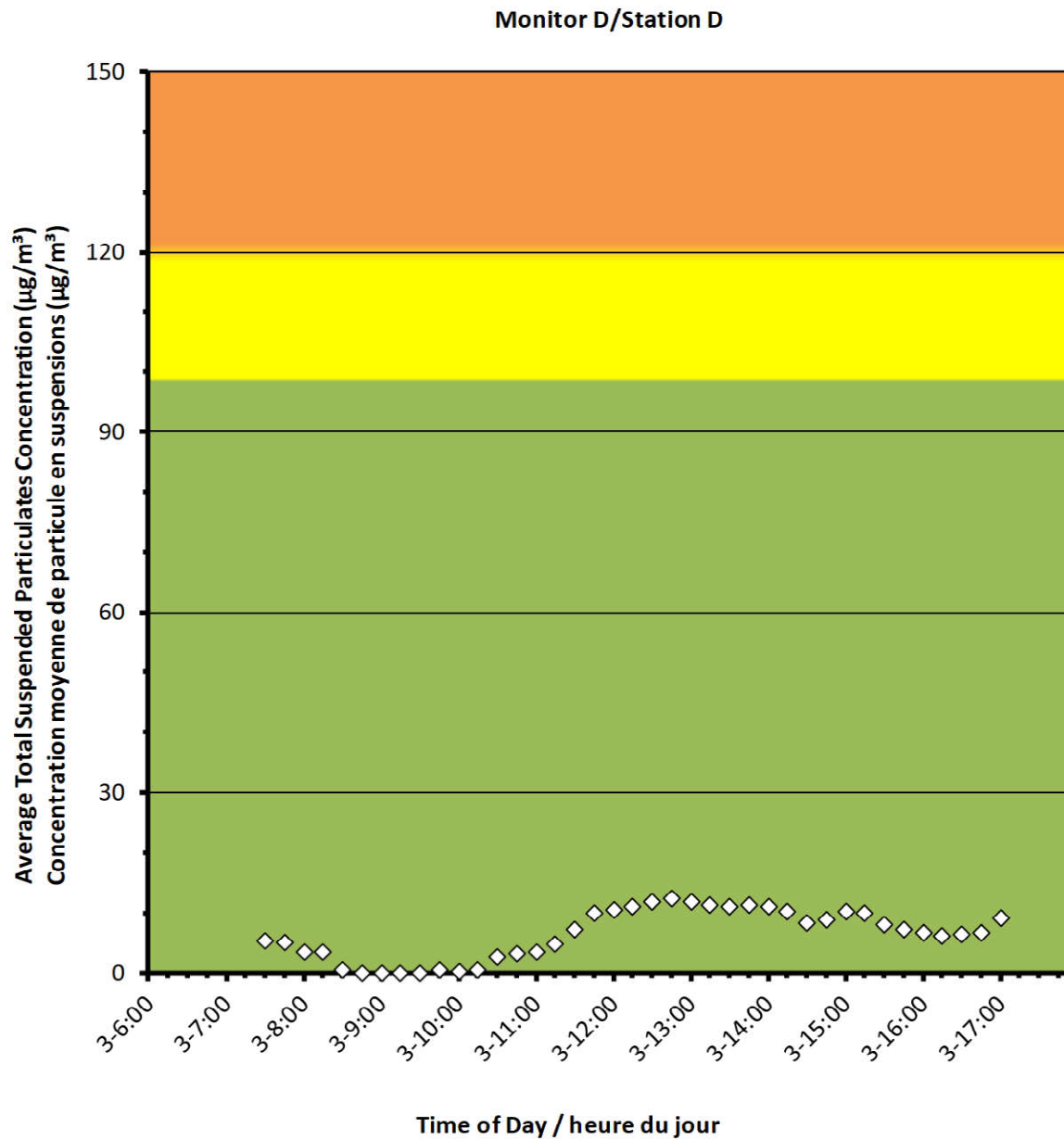
**2022/02/03**

#### Daily Statistics/Statistiques journalières

<b>12</b>	Maximum Concentration ( $\mu\text{g}/\text{m}^3$ ) Concentration maximale ( $\mu\text{g}/\text{m}^3$ )
<b>6</b>	Average Concentration ( $\mu\text{g}/\text{m}^3$ ) Concentration moyenne ( $\mu\text{g}/\text{m}^3$ )

#### Notes

No additional data. Aucune donnée  
additionnelle.





## Port Granby Project Daily Dust Monitoring Data

### Projet de Port Granby Surveillance journalière des particules en suspensions

**2022/02/03**

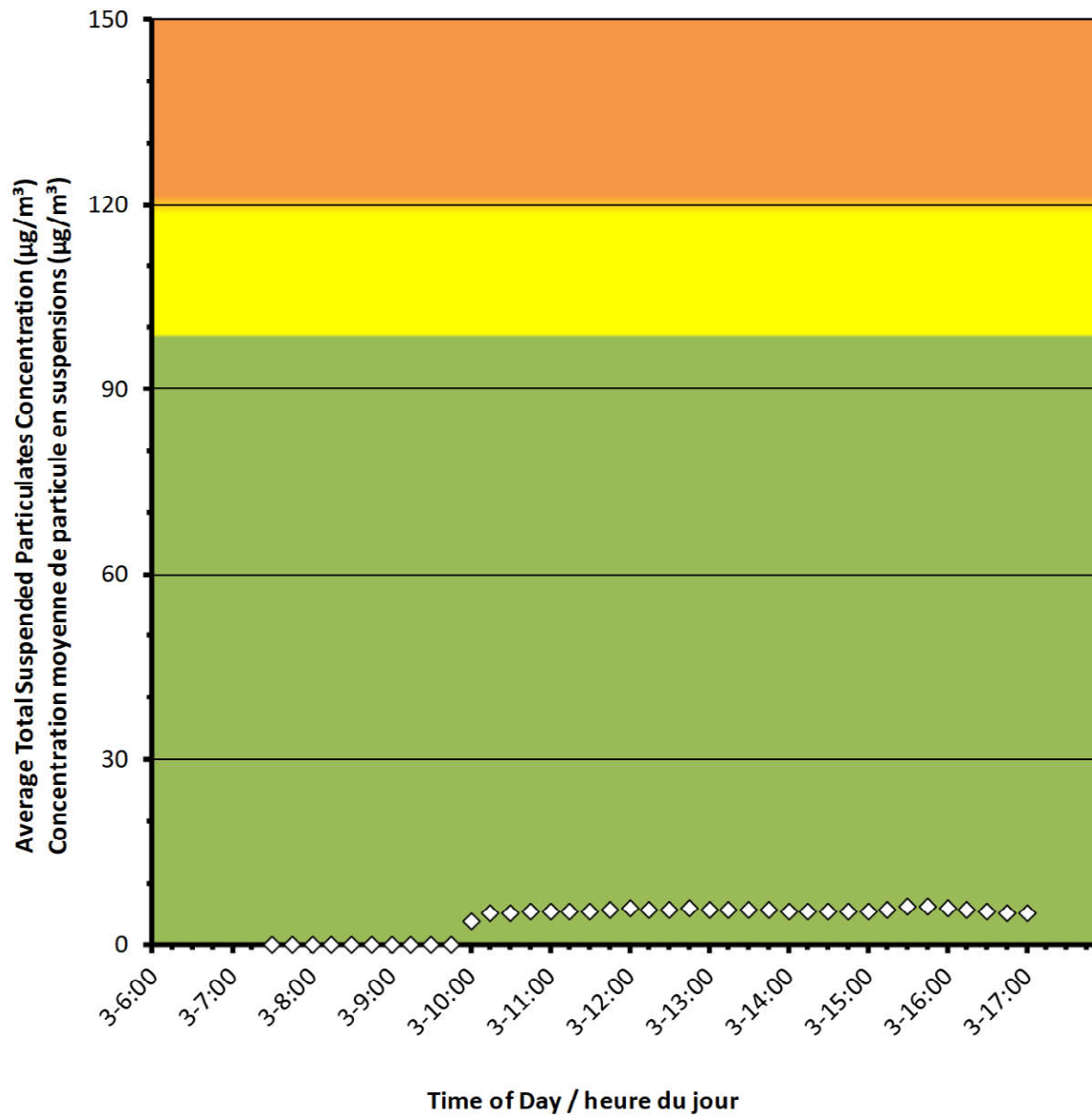
#### Daily Statistics/Statistiques journalières

<b>6</b>	Maximum Concentration ( $\mu\text{g}/\text{m}^3$ ) Concentration maximale ( $\mu\text{g}/\text{m}^3$ )
<b>4</b>	Average Concentration ( $\mu\text{g}/\text{m}^3$ ) Concentration moyenne ( $\mu\text{g}/\text{m}^3$ )

#### Notes

No additional data. Aucune donnée  
additionnelle.

Monitor E/Station E





## Port Granby Project Daily Dust Monitoring Data

### Projet de Port Granby Surveillance journalière des particules en suspensions

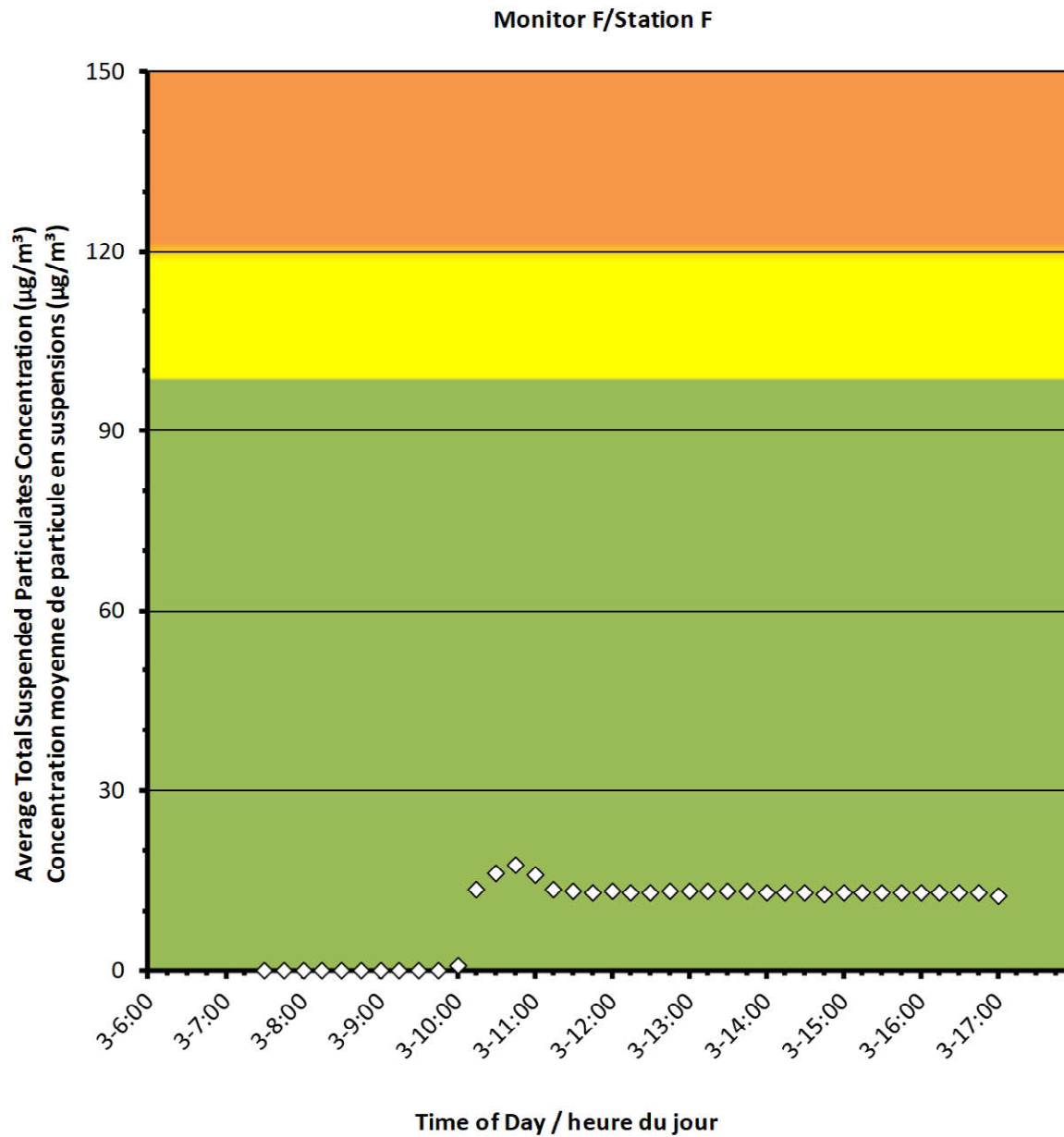
**2022/02/03**

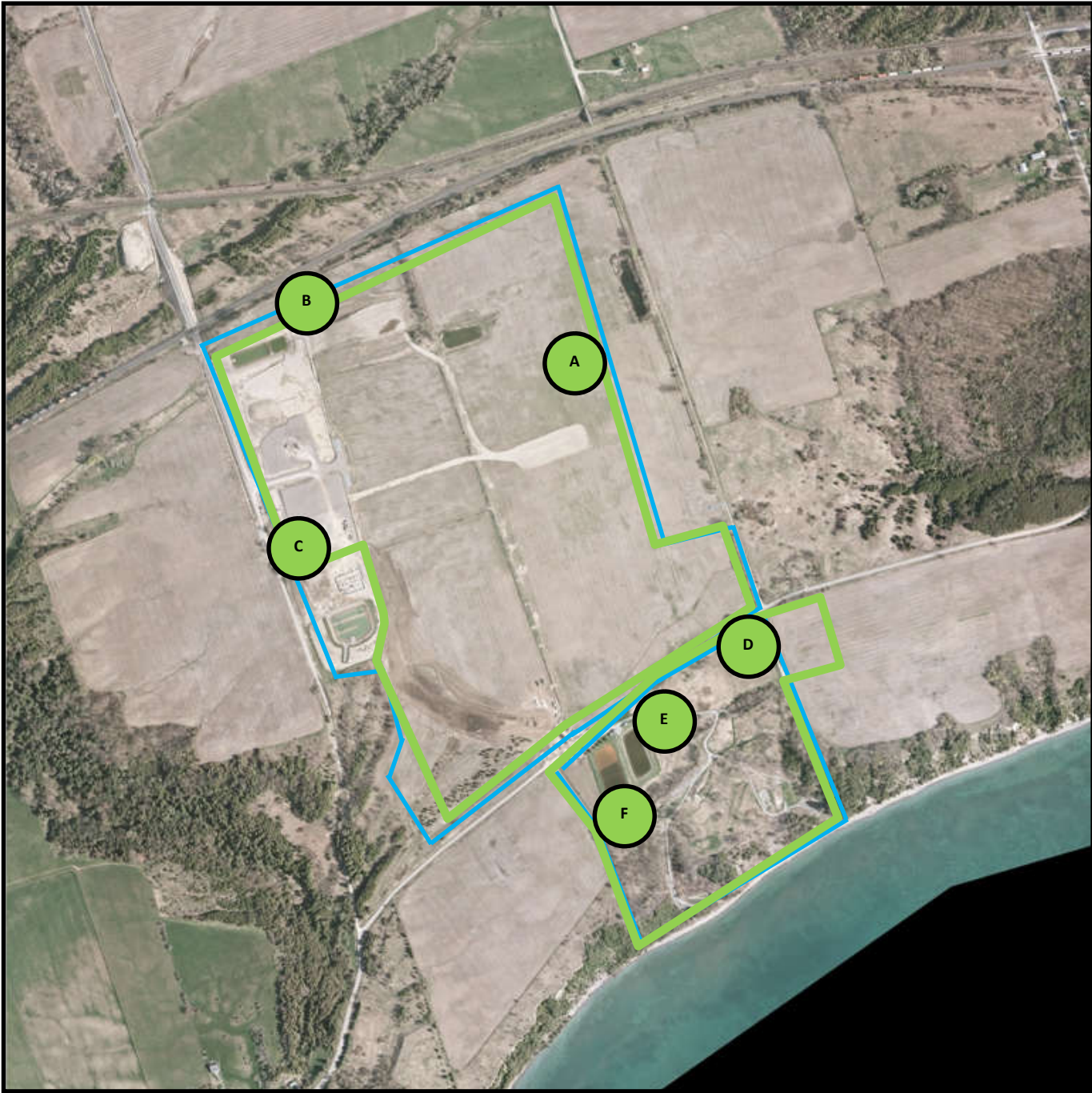
#### Daily Statistics/Statistiques journalières

<b>17</b>	Maximum Concentration ( $\mu\text{g}/\text{m}^3$ ) Concentration maximale ( $\mu\text{g}/\text{m}^3$ )
<b>10</b>	Average Concentration ( $\mu\text{g}/\text{m}^3$ ) Concentration moyenne ( $\mu\text{g}/\text{m}^3$ )

#### Notes

No additional data. Aucune donnée additionnelle.





Canadian Nuclear  
Laboratories

Laboratoires Nucléaires  
Canadiens

### Port Granby Project




### Daily Dust Monitoring Data

### Projet de Port Granby

Surveillance journalière des particules  
en suspensions

**2022/02/04**

#### Legend/Légende

-  Independent Dust Monitoring  
Surveillance indépendante
-  Work Site perimeter  
Périmètre du chantier general.
-  CNL Controlled Area  
Périmètre du site sous le control de  
LCN.



**Port Granby Project**  
**Daily Dust Monitoring Data**

**Projet de Port Granby**  
**Surveillance journalière des**  
**particules en suspensions**

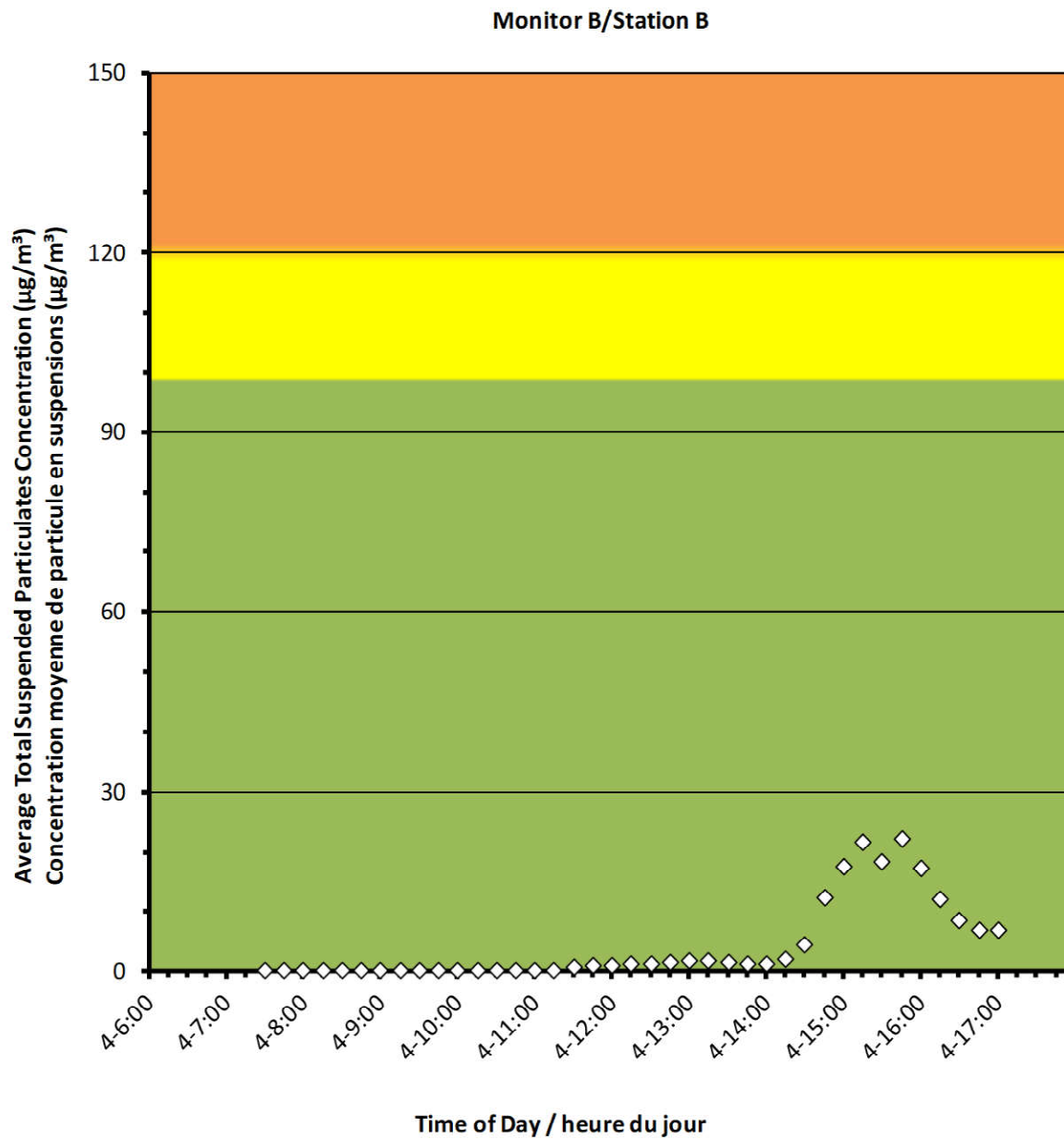
**2022/02/04**

**Daily Statistics/Statistiques journalières**

<b>22</b>	Maximum Concentration ( $\mu\text{g}/\text{m}^3$ ) Concentration maximale ( $\mu\text{g}/\text{m}^3$ )
<b>4</b>	Average Concentration ( $\mu\text{g}/\text{m}^3$ ) Concentration moyenne ( $\mu\text{g}/\text{m}^3$ )

**Notes**

No additional data. Aucune donnée additionnelle.



**Port Granby Project**  
**Daily Dust Monitoring Data**

**Projet de Port Granby**  
**Surveillance journalière des**  
**particules en suspensions**

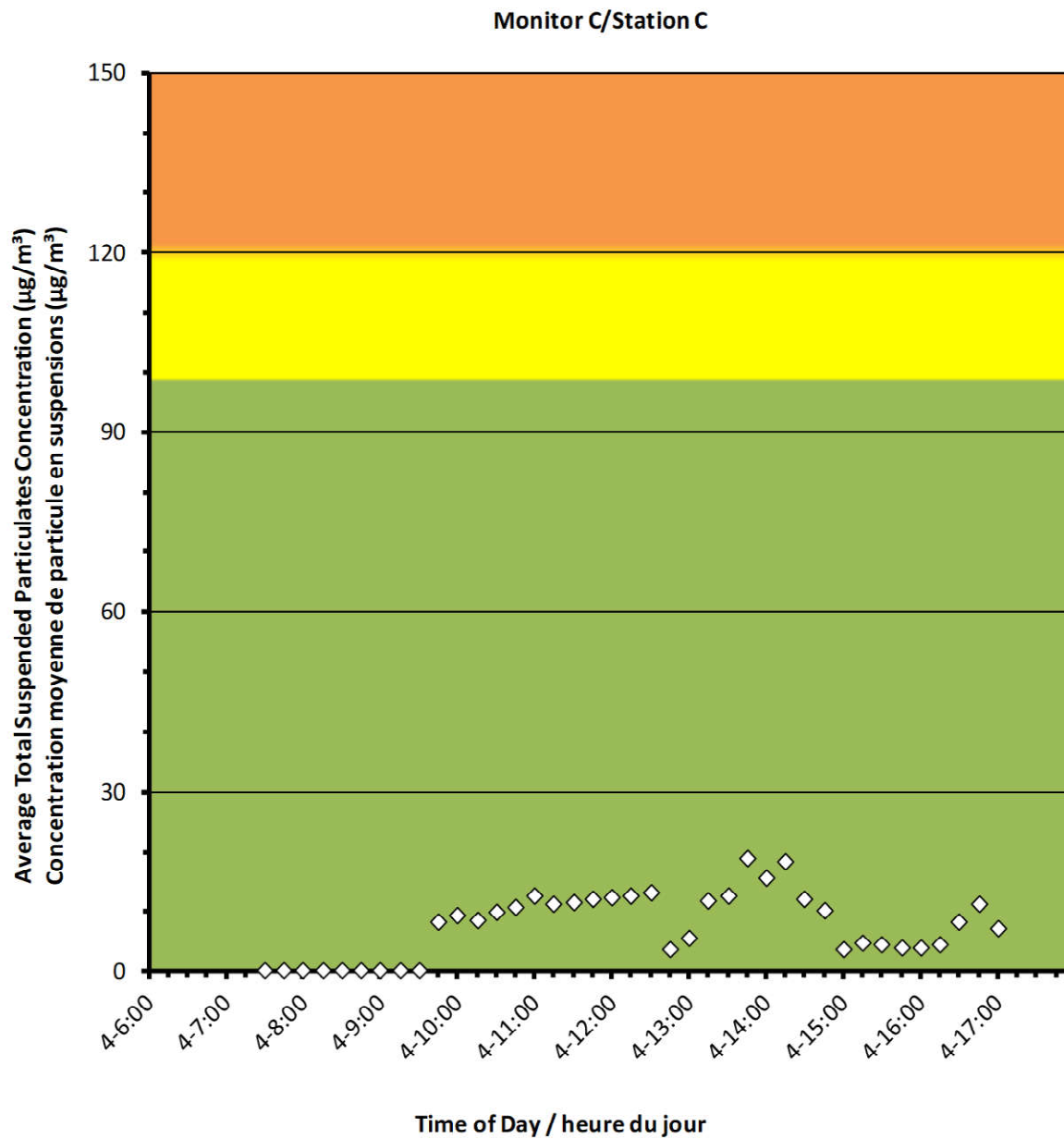
**2022/02/04**

**Daily Statistics/Statistiques journalières**

<b>19</b>	Maximum Concentration ( $\mu\text{g}/\text{m}^3$ ) Concentration maximale ( $\mu\text{g}/\text{m}^3$ )
<b>7</b>	Average Concentration ( $\mu\text{g}/\text{m}^3$ ) Concentration moyenne ( $\mu\text{g}/\text{m}^3$ )

**Notes**

No additional data. Aucune donnée additionnelle.





**Port Granby Project**  
**Daily Dust Monitoring Data**

**Projet de Port Granby**  
**Surveillance journalière des**  
**particules en suspensions**

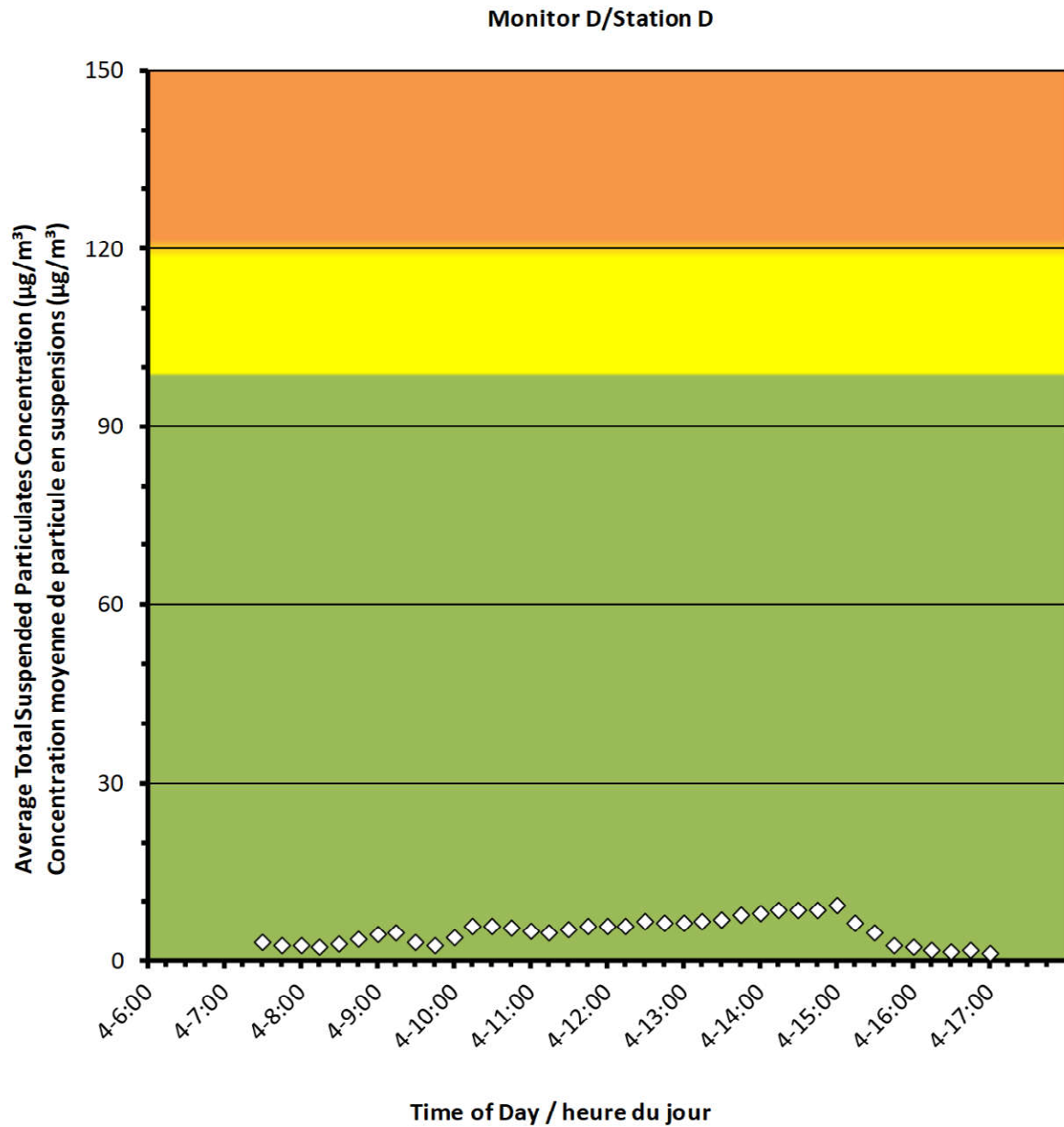
**2022/02/04**

**Daily Statistics/Statistiques journalières**

<b>9</b>	Maximum Concentration ( $\mu\text{g}/\text{m}^3$ ) Concentration maximale ( $\mu\text{g}/\text{m}^3$ )
<b>5</b>	Average Concentration ( $\mu\text{g}/\text{m}^3$ ) Concentration moyenne ( $\mu\text{g}/\text{m}^3$ )

**Notes**

No additional data. Aucune donnée additionnelle.



**Port Granby Project**  
**Daily Dust Monitoring Data**

**Projet de Port Granby**  
**Surveillance journalière des**  
**particules en suspensions**

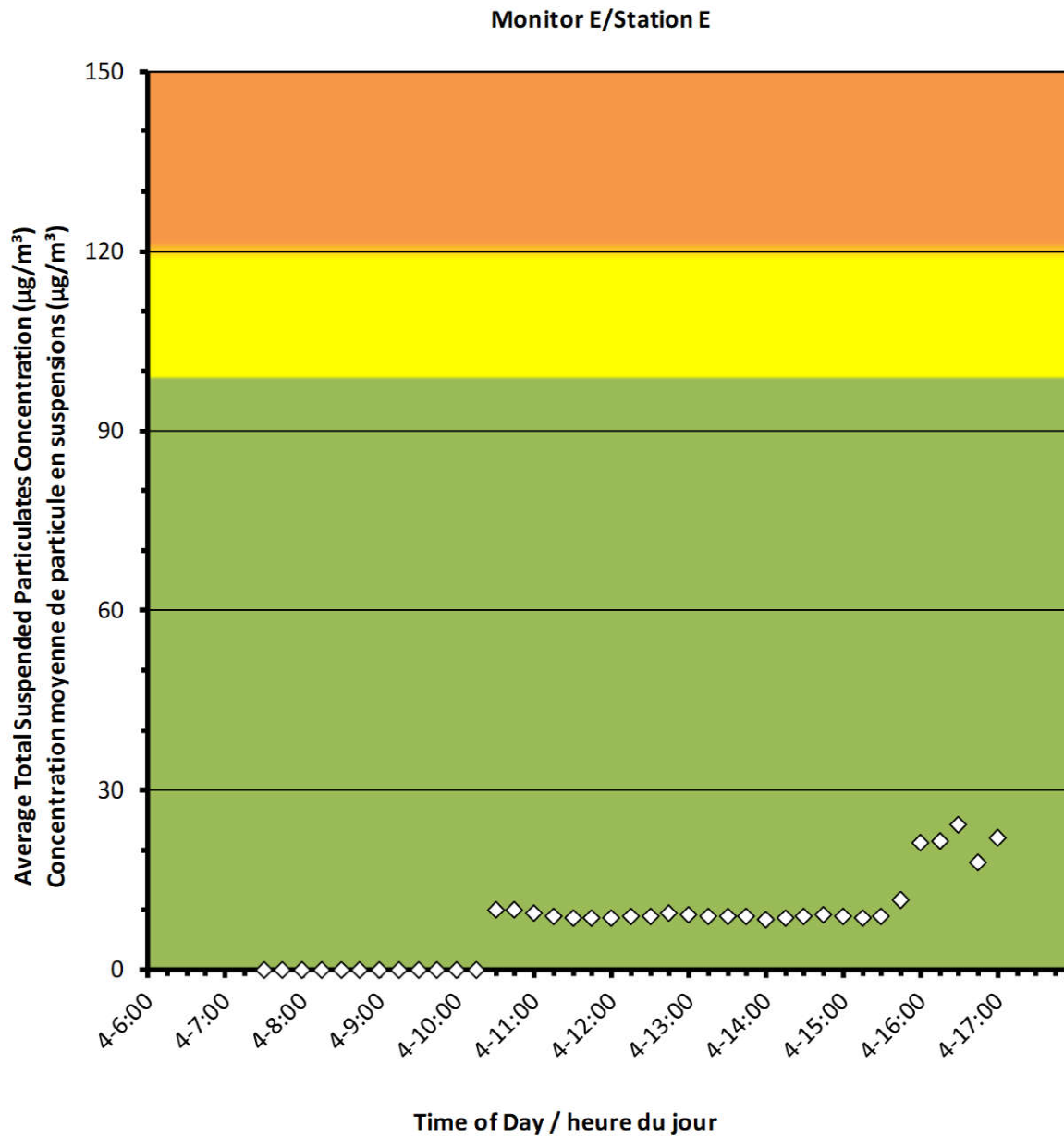
**2022/02/04**

**Daily Statistics/Statistiques journalières**

<b>24</b>	Maximum Concentration ( $\mu\text{g}/\text{m}^3$ ) Concentration maximale ( $\mu\text{g}/\text{m}^3$ )
<b>8</b>	Average Concentration ( $\mu\text{g}/\text{m}^3$ ) Concentration moyenne ( $\mu\text{g}/\text{m}^3$ )

**Notes**

No additional data. Aucune donnée additionnelle.





## Port Granby Project Daily Dust Monitoring Data

### Projet de Port Granby Surveillance journalière des particules en suspensions

**2022/02/04**

#### Daily Statistics/Statistiques journalières

<b>18</b>	Maximum Concentration ( $\mu\text{g}/\text{m}^3$ ) Concentration maximale ( $\mu\text{g}/\text{m}^3$ )
<b>2</b>	Average Concentration ( $\mu\text{g}/\text{m}^3$ ) Concentration moyenne ( $\mu\text{g}/\text{m}^3$ )

#### Notes

No additional data. Aucune donnée  
additionnelle.

